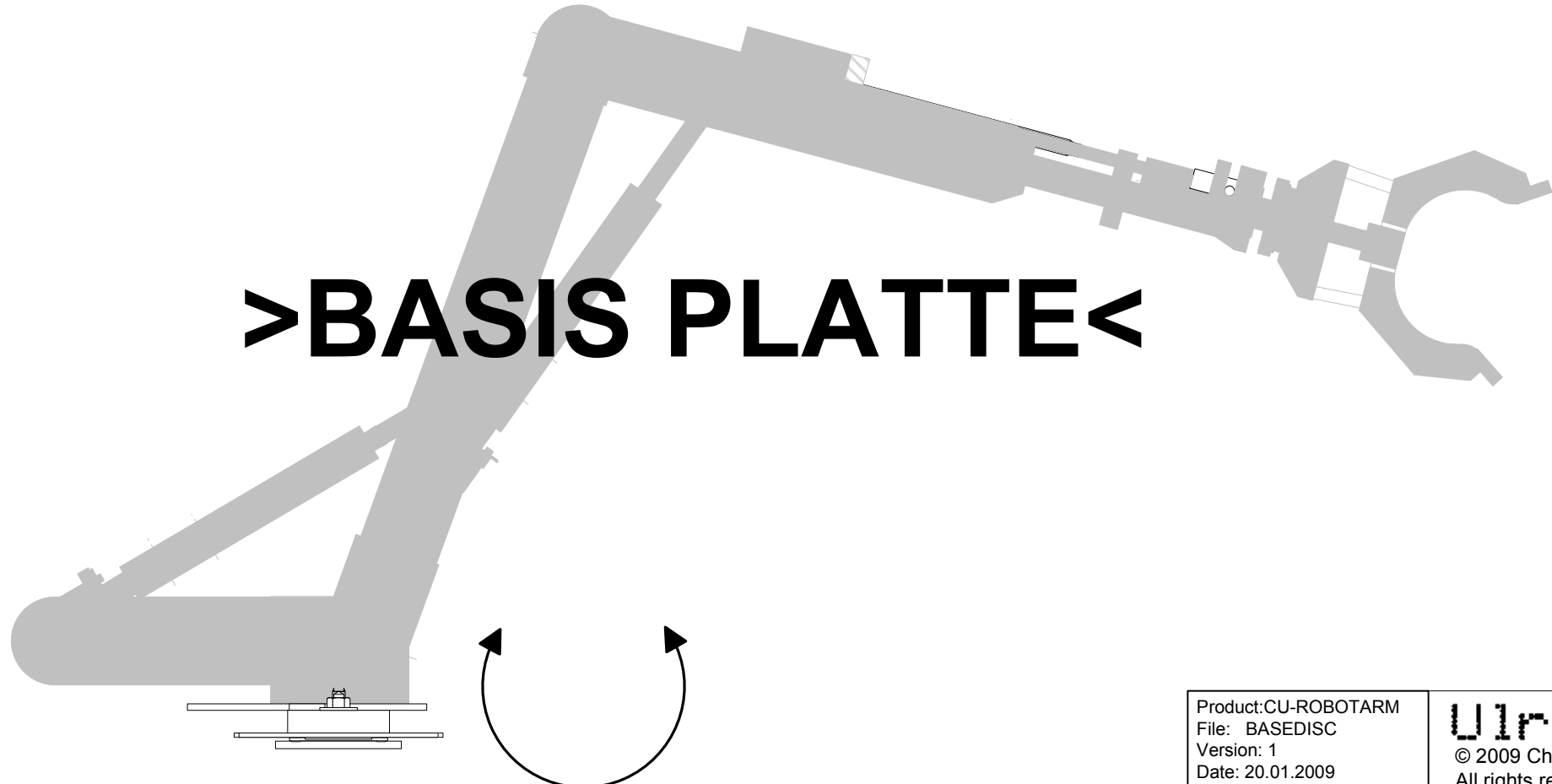
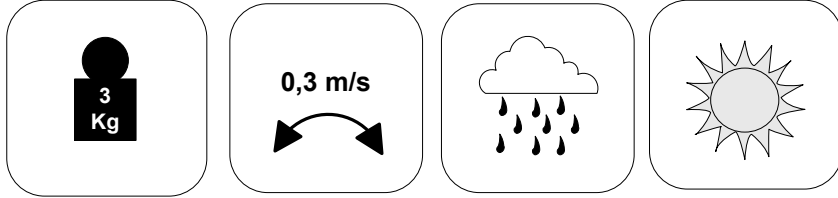


8 7 6 5 4 3 2 1

CU-ROBOTARM (AddOn for mobile robots)



>BASIS PLATTE<

Sollte in diesem Plan oder in dessen begleitenden Dokumenten noch der ein oder andere Fehler drin stecken, so bitte ich um Nachsicht und Hinweise per Mail an christian@ulrichc.de.

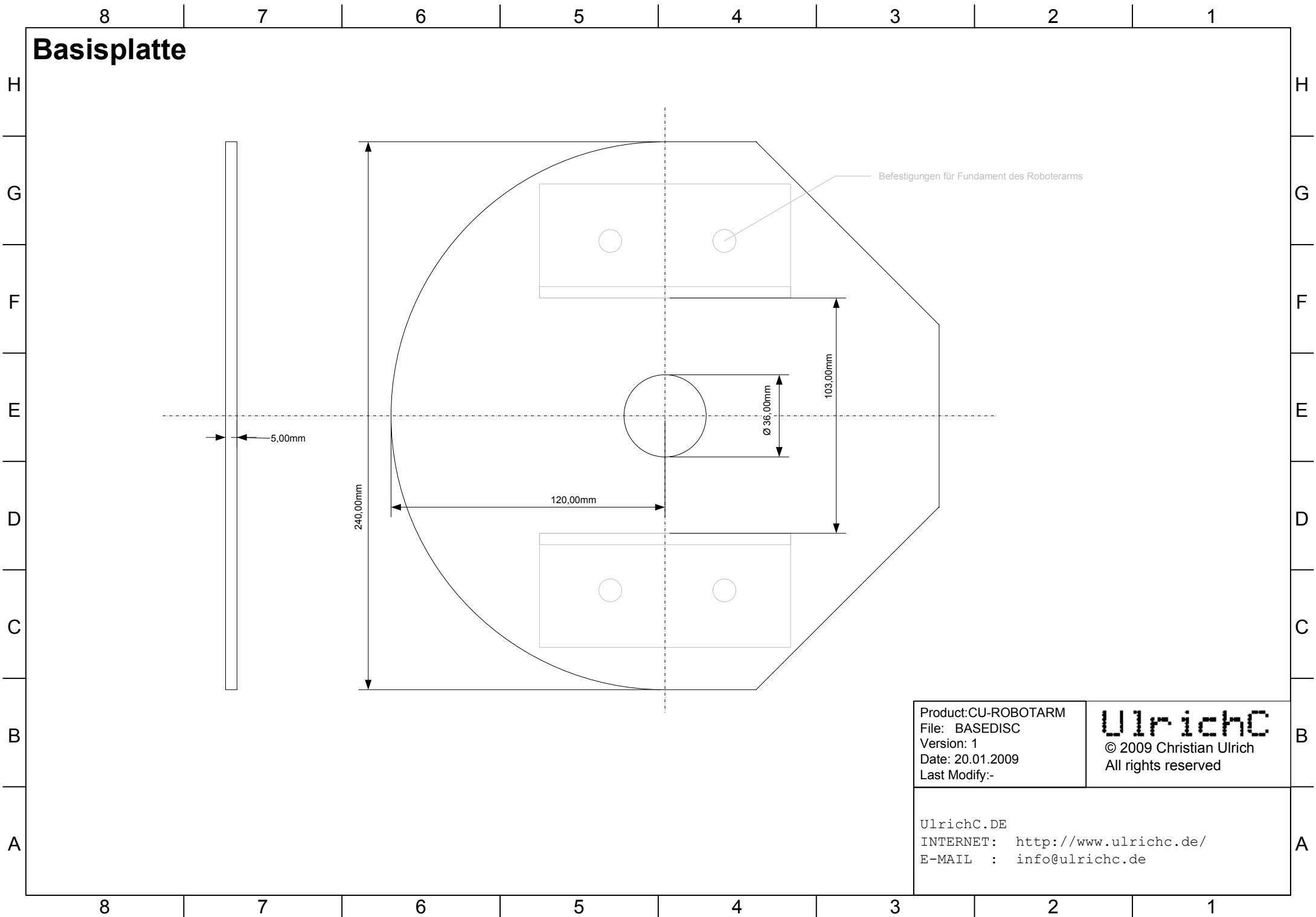
A Änderungen und Ergänzungen dieses Dokuments sind im Downloadbereich bei <http://www.ulrichc.de/> an der Versionsnummer erkennbar!

Product:CU-ROBOTARM
File: BASEDISC
Version: 1
Date: 20.01.2009
Last Modify:-

UlrichC
© 2009 Christian Ulrich
All rights reserved

UlrichC.DE
INTERNET: <http://www.ulrichc.de/>
E-MAIL : info@ulrichc.de

Basisplatte



Befestigungen für Fundament des Roboterarms

5,00mm

240,00mm

120,00mm

Ø 36,00mm

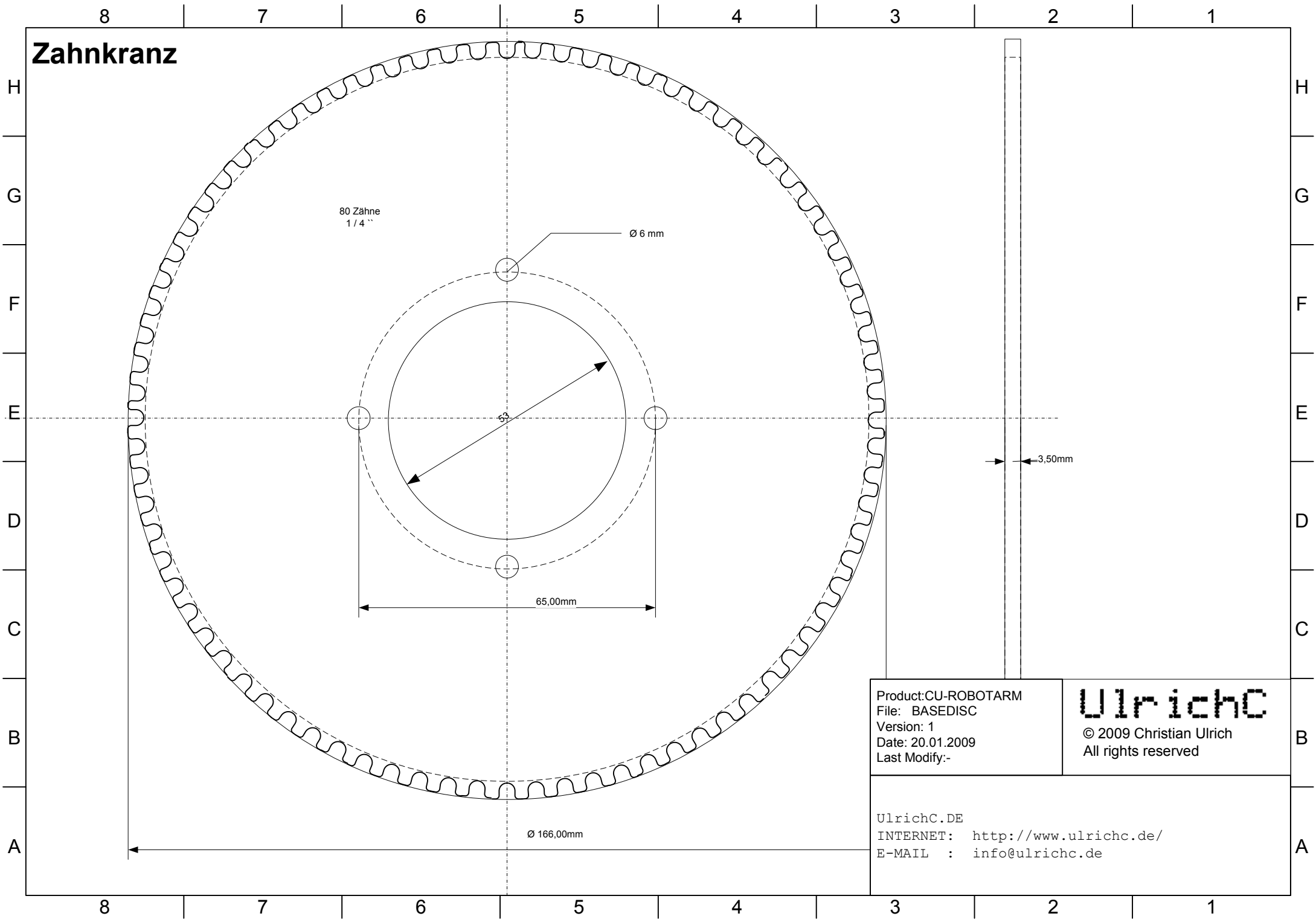
103,00mm

Product:CU-ROBOTARM
File: BASEDISC
Version: 1
Date: 20.01.2009
Last Modify:-

UlrichC
© 2009 Christian Ulrich
All rights reserved

UlrichC.DE
INTERNET: <http://www.ulrichc.de/>
E-MAIL : info@ulrichc.de

Zahnkranz



Product: CU-ROBOTARM
File: BASEDISC
Version: 1
Date: 20.01.2009
Last Modify:-

UlrichC

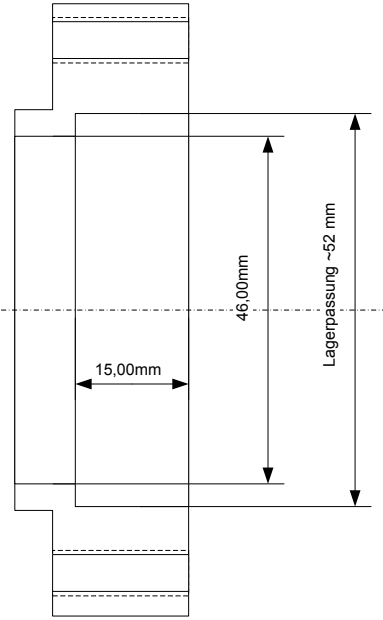
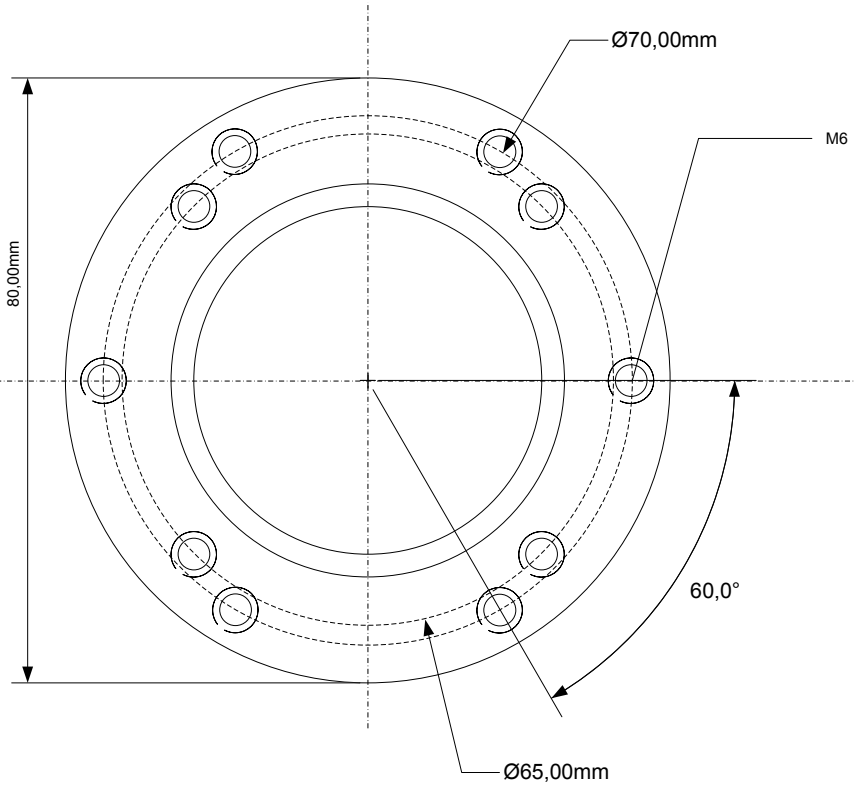
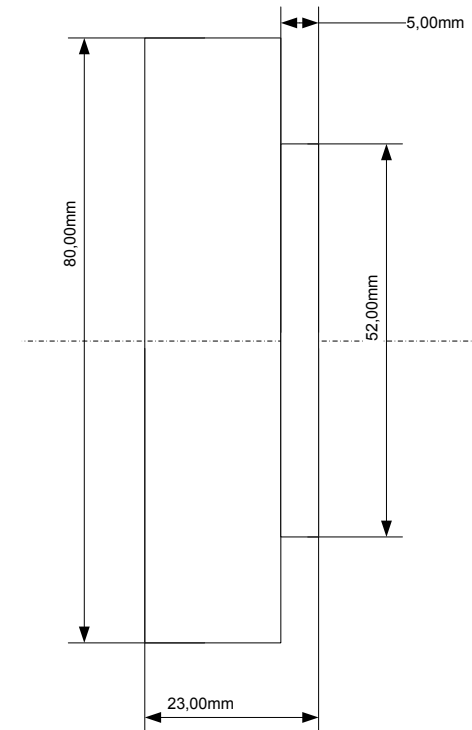
© 2009 Christian Ulrich
All rights reserved

UlrichC.DE
INTERNET: <http://www.ulrichc.de/>
E-MAIL : info@ulrichc.de

Lagerflansch LF1

H
G
F
E
D
C
B
A

H
G
F
E
D
C
B
A



Product: CU-ROBOTARM
File: BASEDISC
Version: 1
Date: 20.01.2009
Last Modify:-

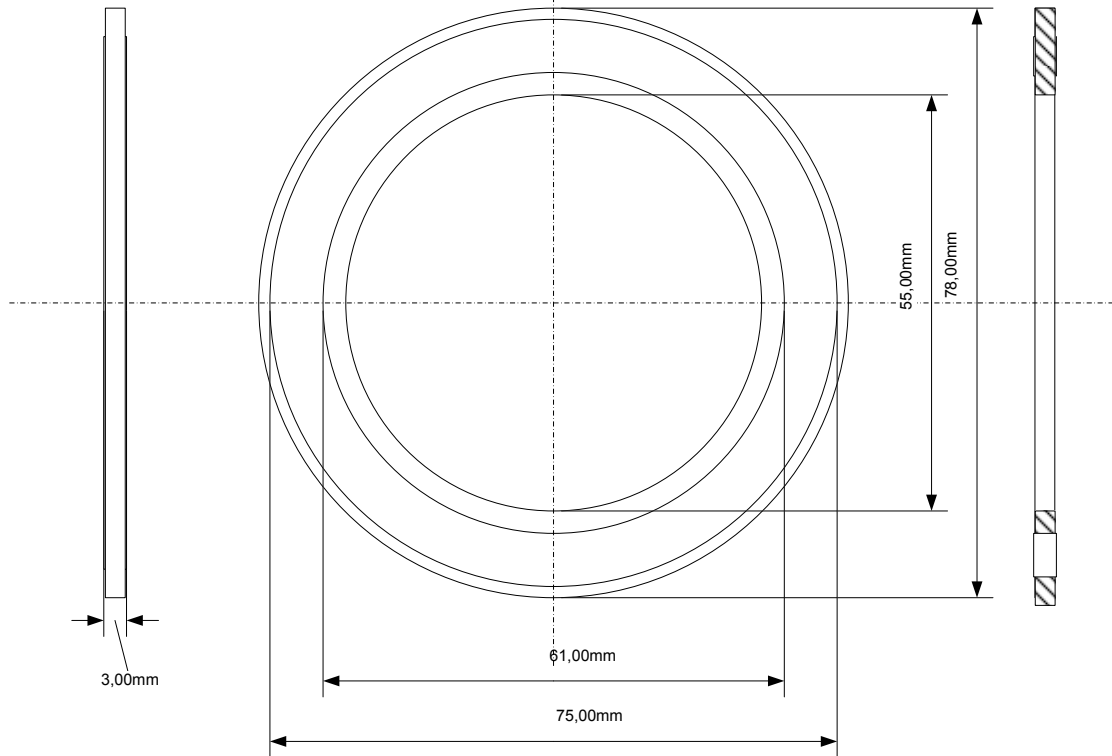
UlrichC
© 2009 Christian Ulrich
All rights reserved

UlrichC.DE
INTERNET: <http://www.ulrichc.de/>
E-MAIL : info@ulrichc.de

8 7 6 5 4 3 2 1

Radiallager

Radiallager AXK 5578

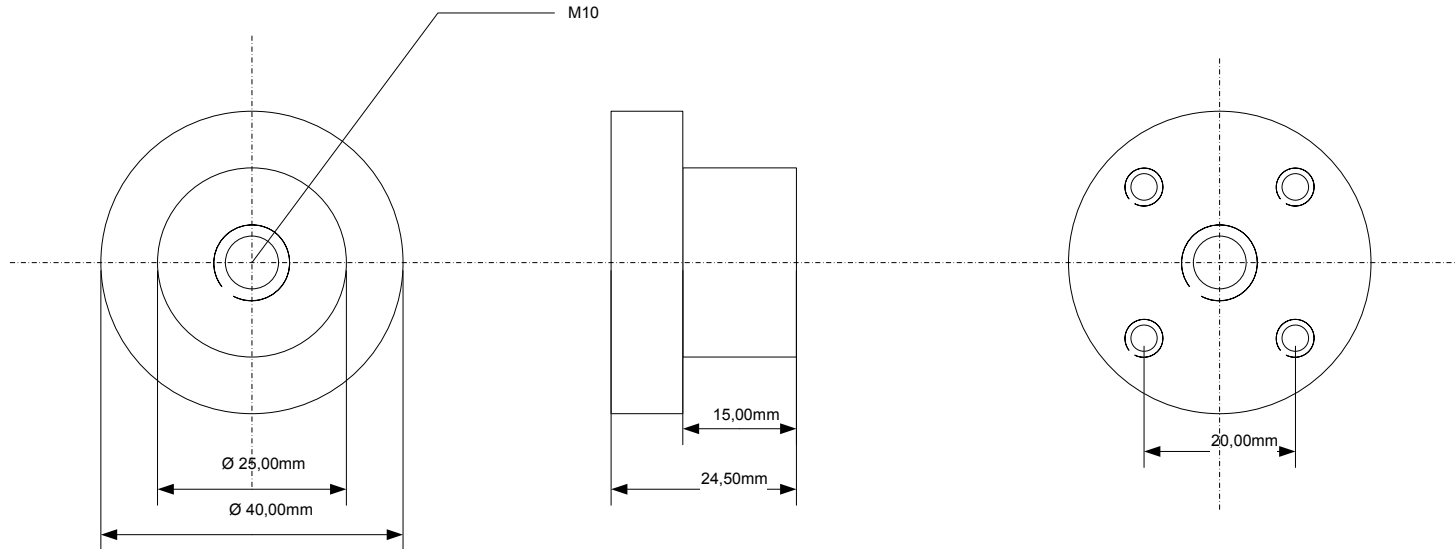


Product:CU-ROBOTARM
File: BASEPLATE
Version: 1
Date: 20.01.2009
Last Modify:-

UlrichC
© 2009 Christian Ulrich
All rights reserved

UlrichC.DE
INTERNET: <http://www.ulrichc.de/>
E-MAIL : info@ulrichc.de

Lagerzapfen

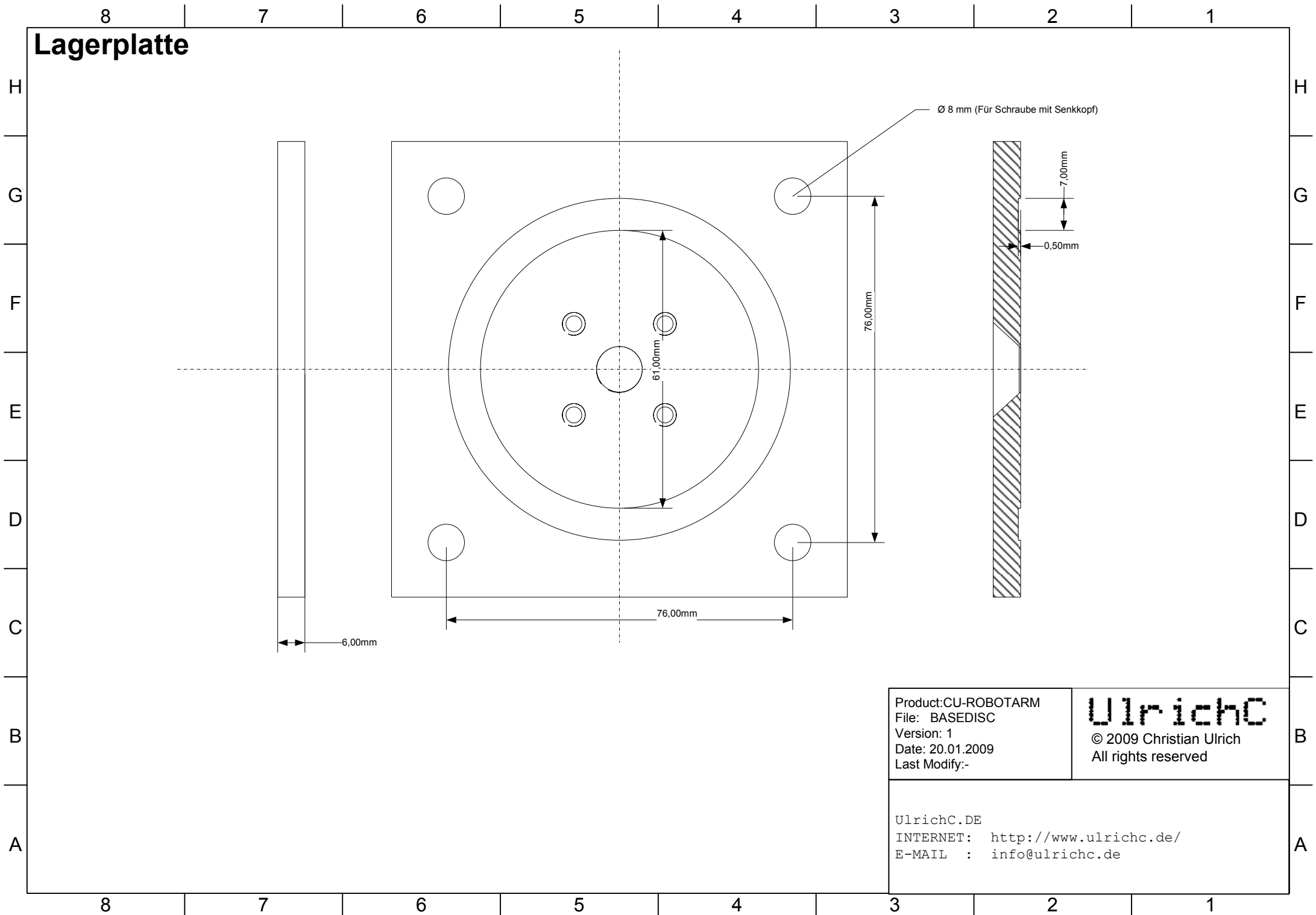


Product: CU-ROBOTARM
File: BASEDISC
Version: 1
Date: 20.01.2009
Last Modify:-

UlrichC
© 2009 Christian Ulrich
All rights reserved

UlrichC.DE
INTERNET: <http://www.ulrichc.de/>
E-MAIL : info@ulrichc.de

Lagerplatte



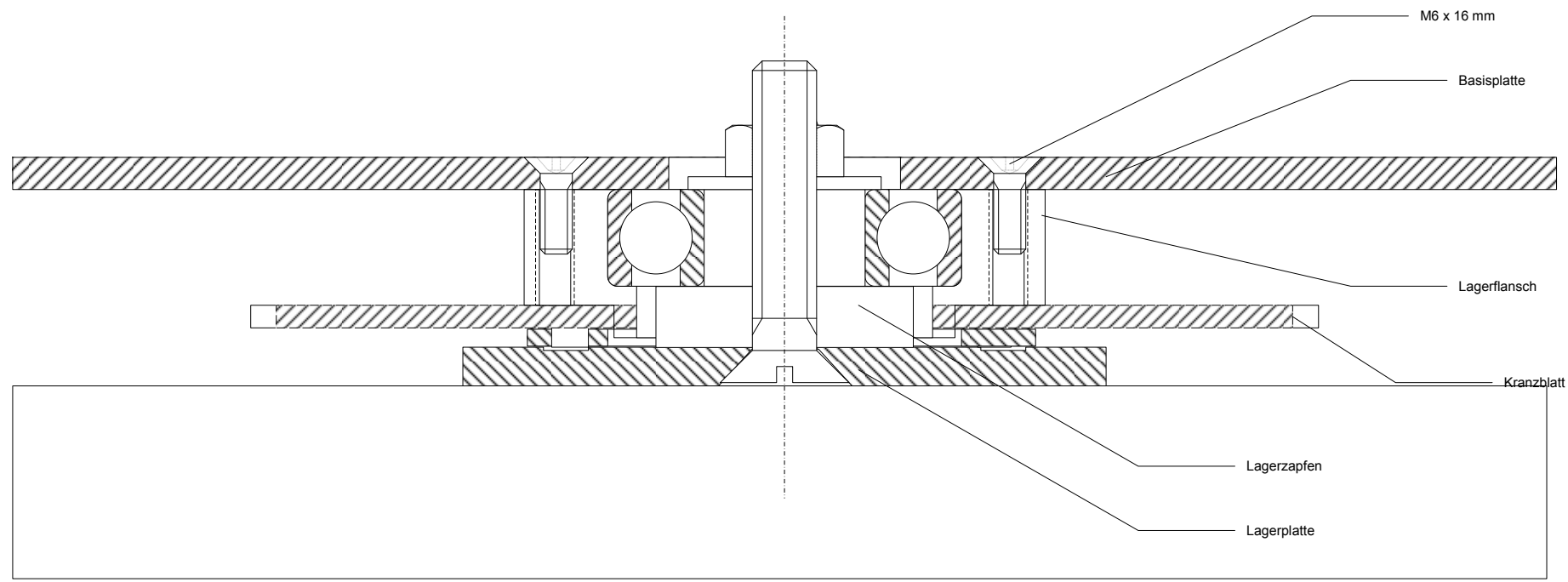
Product: CU-ROBOTARM
File: BASEDISC
Version: 1
Date: 20.01.2009
Last Modify: -

UlrichC
© 2009 Christian Ulrich
All rights reserved

UlrichC.DE
INTERNET: <http://www.ulrichc.de/>
E-MAIL : info@ulrichc.de

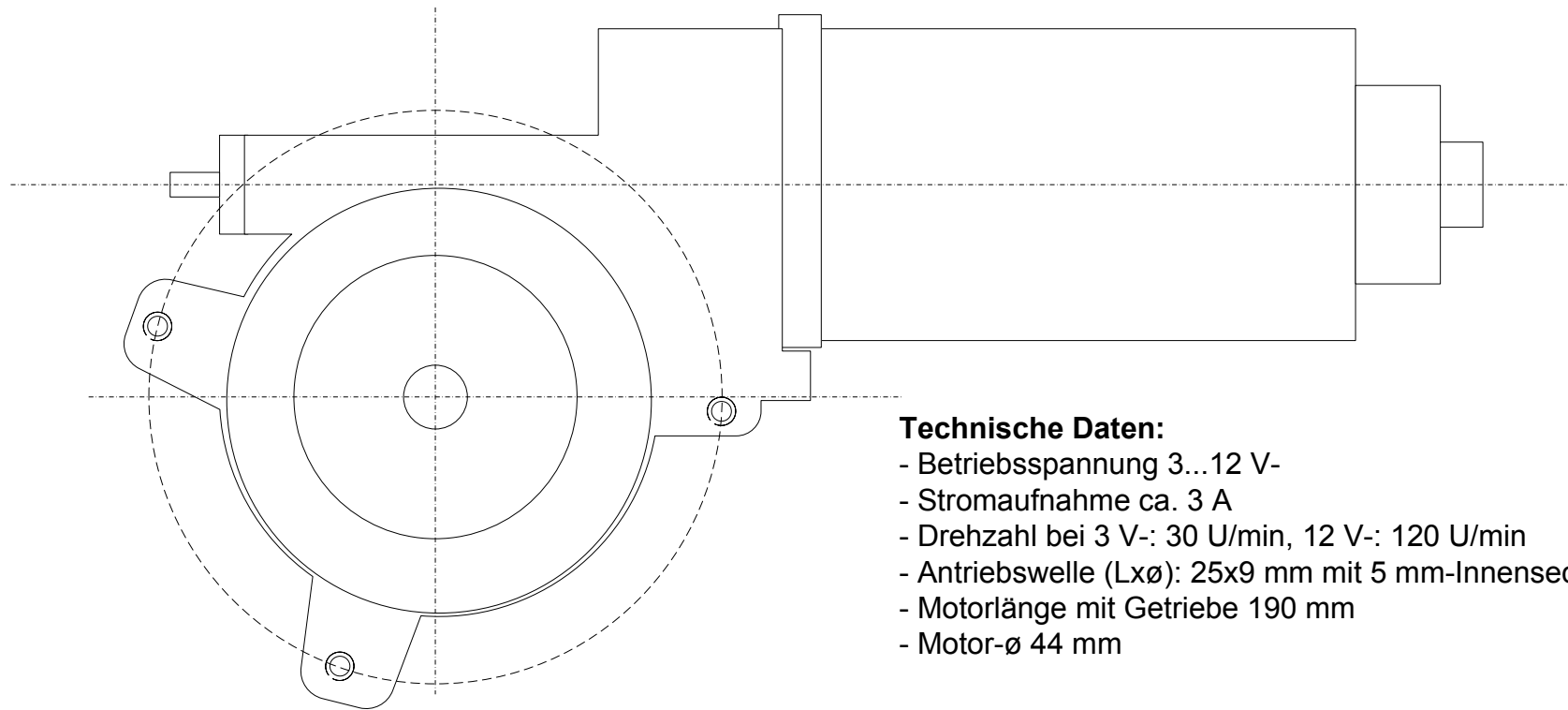
Basisplatte Montage

(Montage)



<p>Product: CU-ROBOTARM File: BASEDISC Version: 1 Date: 20.01.2009 Last Modify:-</p>	<p>UlrichC © 2009 Christian Ulrich All rights reserved</p>
<p>UlrichC.DE INTERNET: http://www.ulrichc.de/ E-MAIL : info@ulrichc.de</p>	

Antriebsmotor



Technische Daten:

- Betriebsspannung 3...12 V-
- Stromaufnahme ca. 3 A
- Drehzahl bei 3 V-: 30 U/min, 12 V-: 120 U/min
- Antriebswelle (Lx \emptyset): 25x9 mm mit 5 mm-Innensechskant
- Motorlänge mit Getriebe 190 mm
- Motor- \emptyset 44 mm

Product:CU-ROBOTARM
File: BASEDISC
Version: 1
Date: 20.01.2009
Last Modify:-

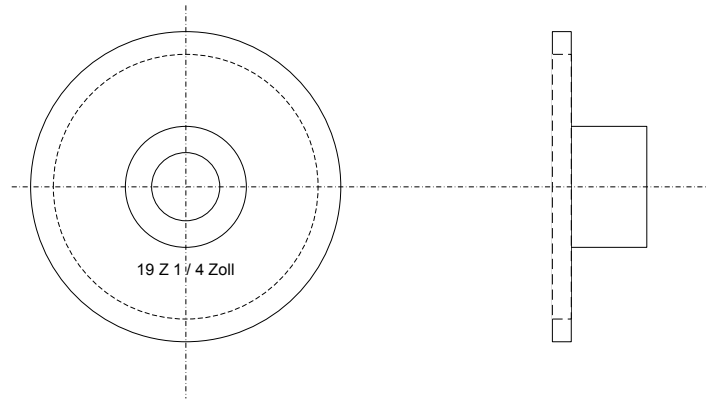
UlrichC

© 2009 Christian Ulrich
All rights reserved

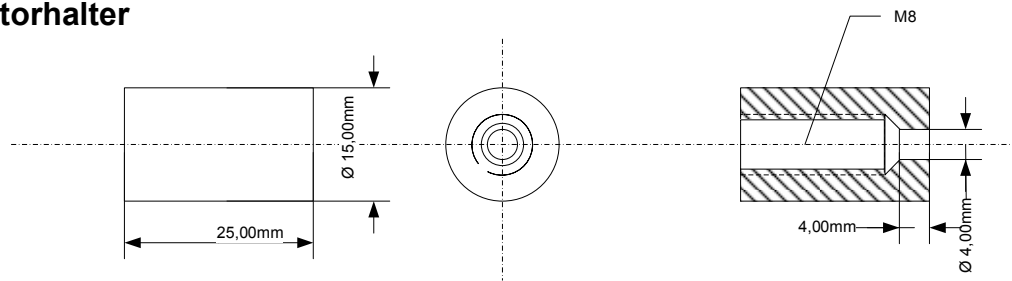
UlrichC.DE
INTERNET: <http://www.ulrichc.de/>
E-MAIL : info@ulrichc.de

Motorteile

Kettenritzel



Motorhalter



Product:CU-ROBOTARM
File: BASEDISC
Version: 1
Date: 20.01.2009
Last Modify:-

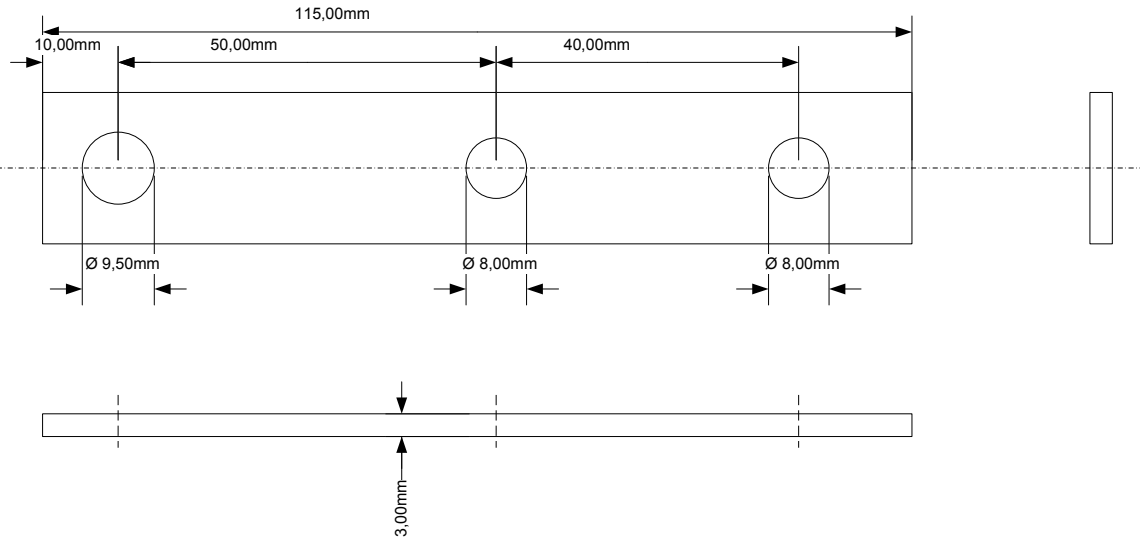
UlrichC

© 2009 Christian Ulrich
All rights reserved

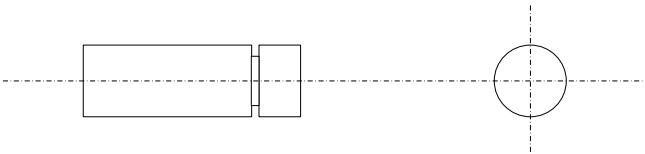
UlrichC.DE
INTERNET: <http://www.ulrichc.de/>
E-MAIL : info@ulrichc.de

Kettenspanner

Hebel



Ritzelachse



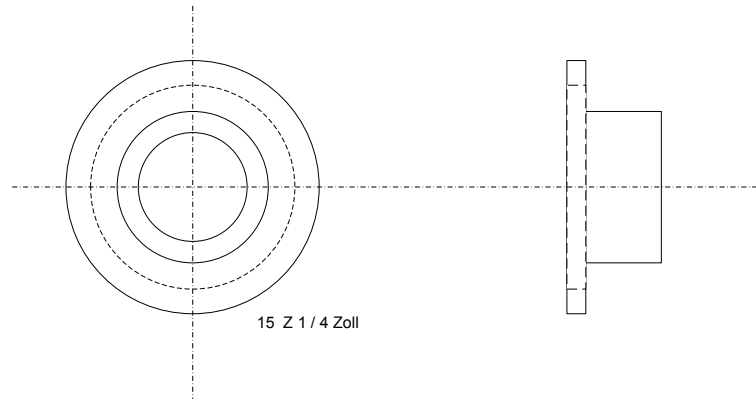
Product: CU-ROBOTARM
File: BASEDISC
Version: 1
Date: 20.01.2009
Last Modify:-

UlrichC

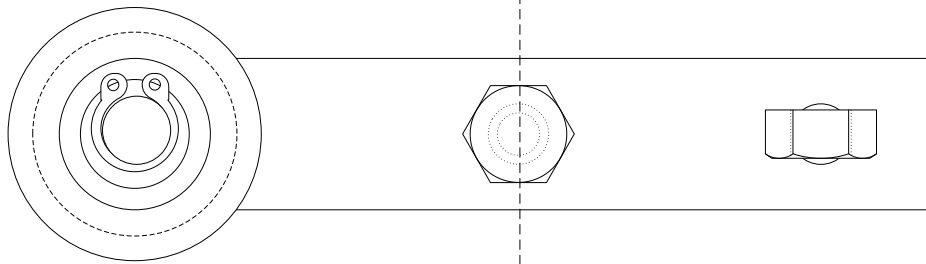
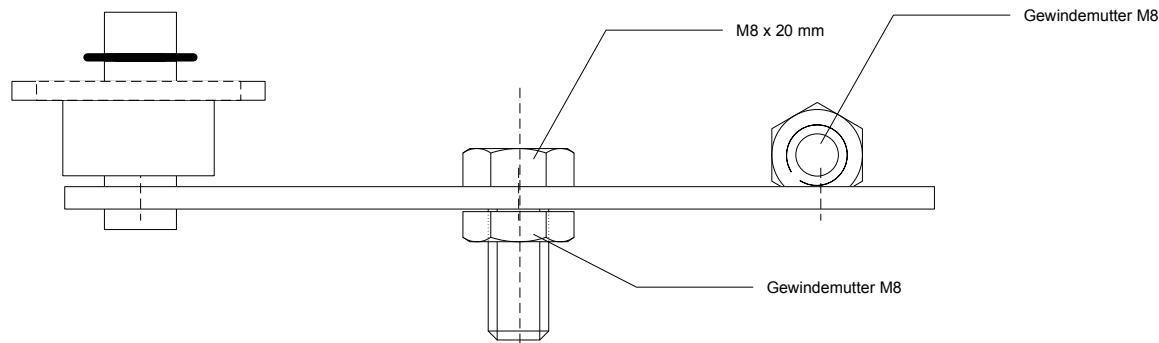
© 2009 Christian Ulrich
All rights reserved

UlrichC.DE
INTERNET: <http://www.ulrichc.de/>
E-MAIL : info@ulrichc.de

Spannritzel



(MONTAGE)

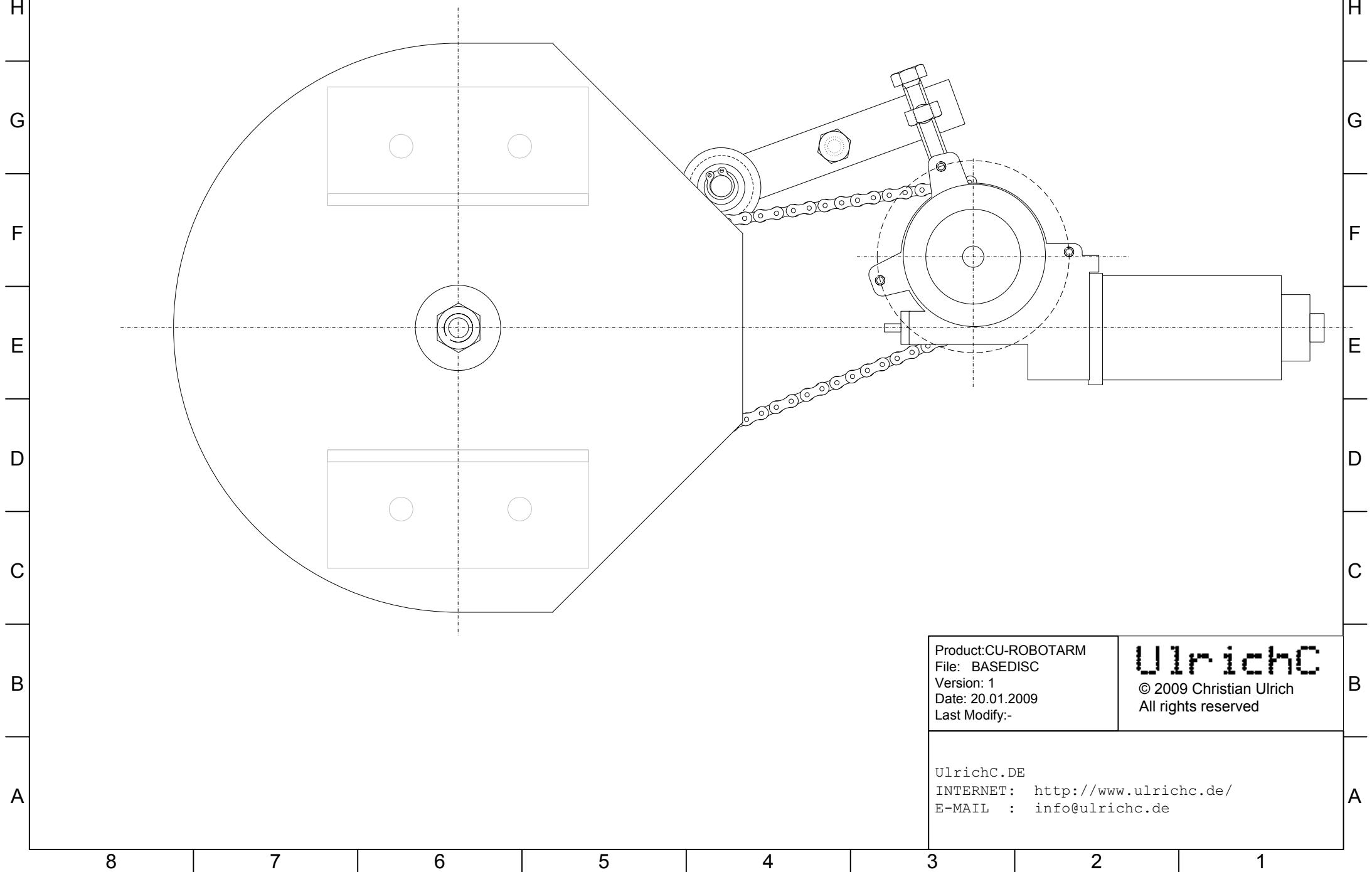


Product: CU-ROBOTARM
File: BASEDISC
Version: 1
Date: 20.01.2009
Last Modify:-

UlrichC
© 2009 Christian Ulrich
All rights reserved

UlrichC.DE
INTERNET: <http://www.ulrichc.de/>
E-MAIL : info@ulrichc.de

Basisplatte Montage



Product:CU-ROBOTARM
File: BASEDISC
Version: 1
Date: 20.01.2009
Last Modify:-

UlrichC
© 2009 Christian Ulrich
All rights reserved

UlrichC.DE
INTERNET: <http://www.ulrichc.de/>
E-MAIL : info@ulrichc.de