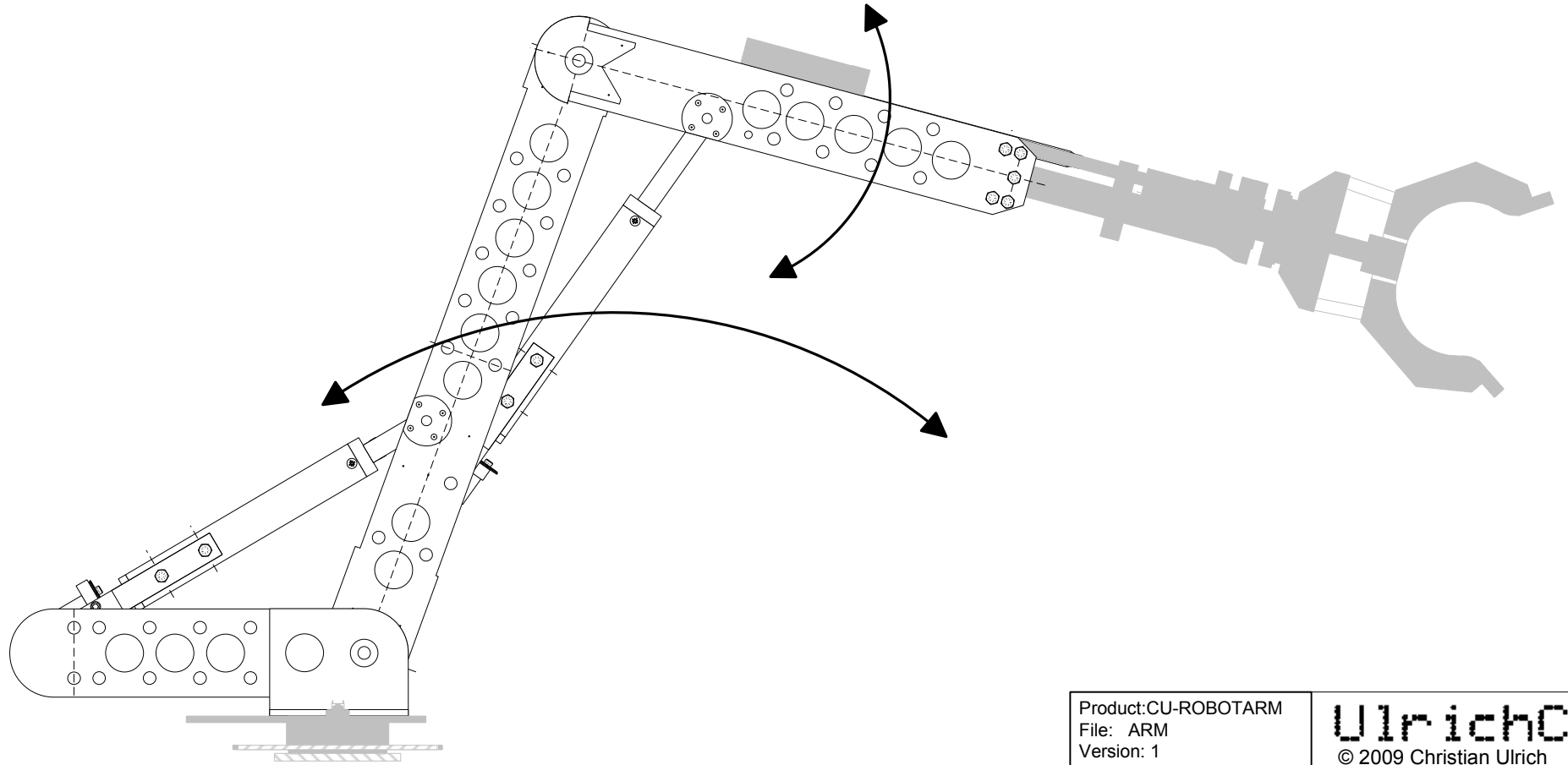
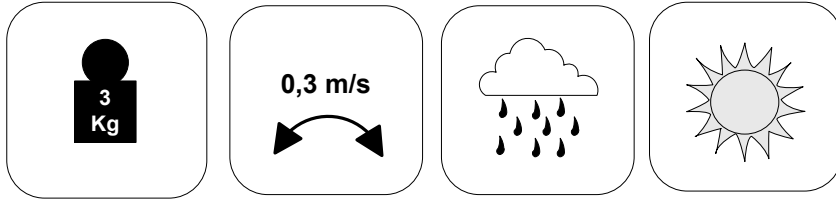


CU-ROBOTARM (AddOn for mobile robots)



Sollte in diesem Plan oder in dessen begleitenden Dokumenten noch der ein oder andere Fehler drin stecken, so bitte ich um Nachsicht und Hinweise per Mail an christian@ulrichc.de.

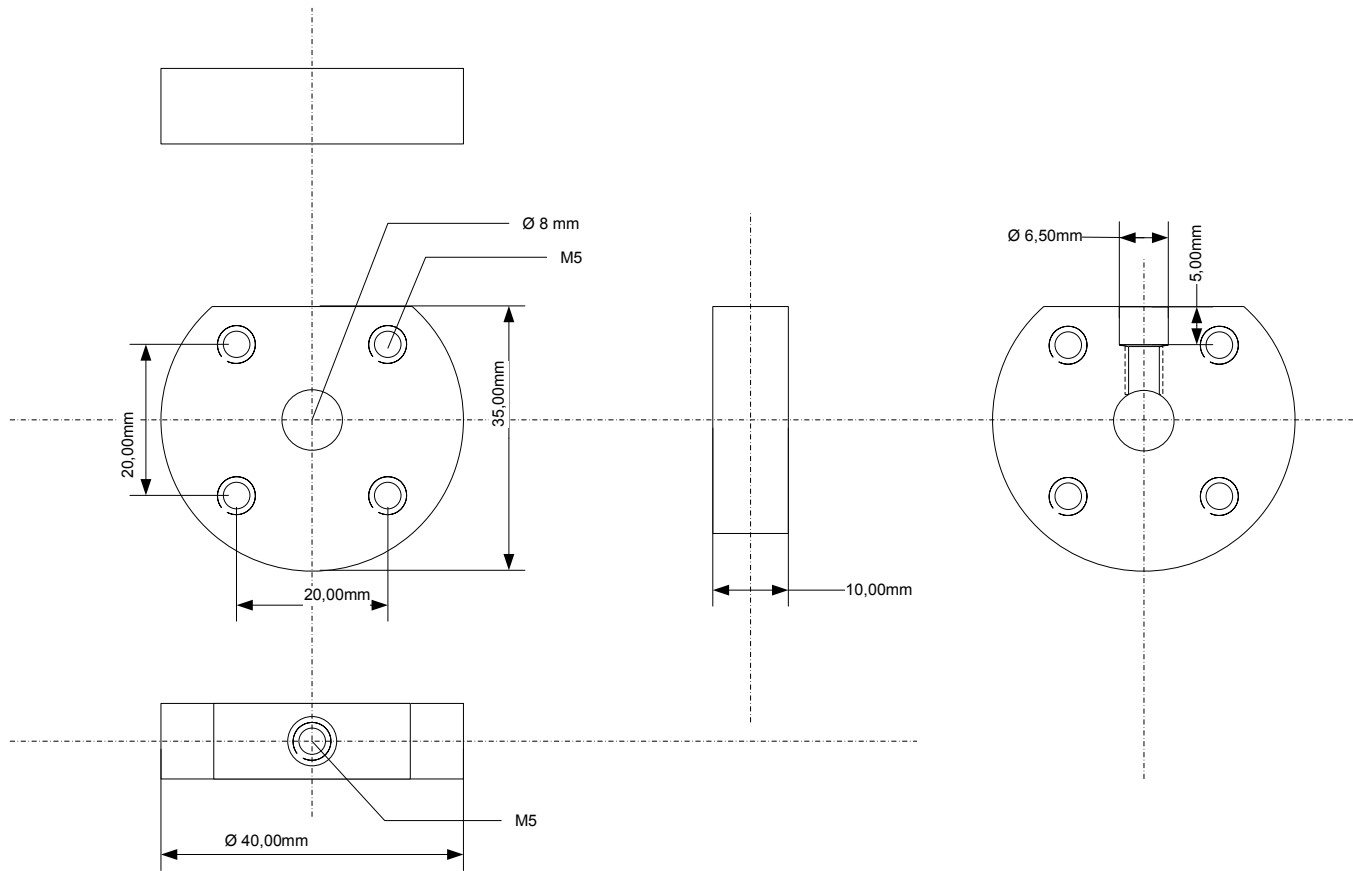
Änderungen und Ergänzungen dieses Dokuments sind im Downloadbereich bei <http://www.ulrichc.de/> an der Versionsnummer erkennbar!

Product:CU-ROBOTARM
 File: ARM
 Version: 1
 Date: 20.01.2009
 Last Modify:-

UlrichC
 © 2009 Christian Ulrich
 All rights reserved

UlrichC.DE
 INTERNET: <http://www.ulrichc.de/>
 E-MAIL : info@ulrichc.de

Kolbenkopf-Arretierung



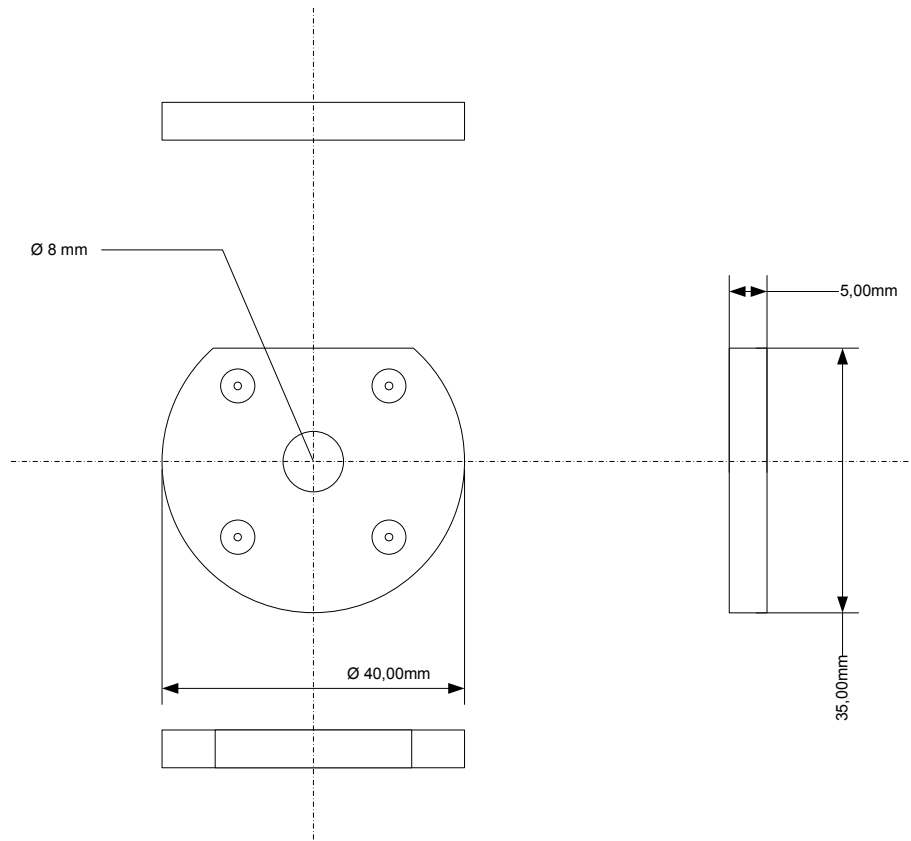
Product: CU-ROBOTARM
File: ARM
Version: 1
Date: 20.01.2009
Last Modify:-

UlrichC

© 2009 Christian Ulrich
All rights reserved

UlrichC.DE
INTERNET: <http://www.ulrichc.de/>
E-MAIL : info@ulrichc.de

Kolbenkopf-Arretierung-Gegenlager



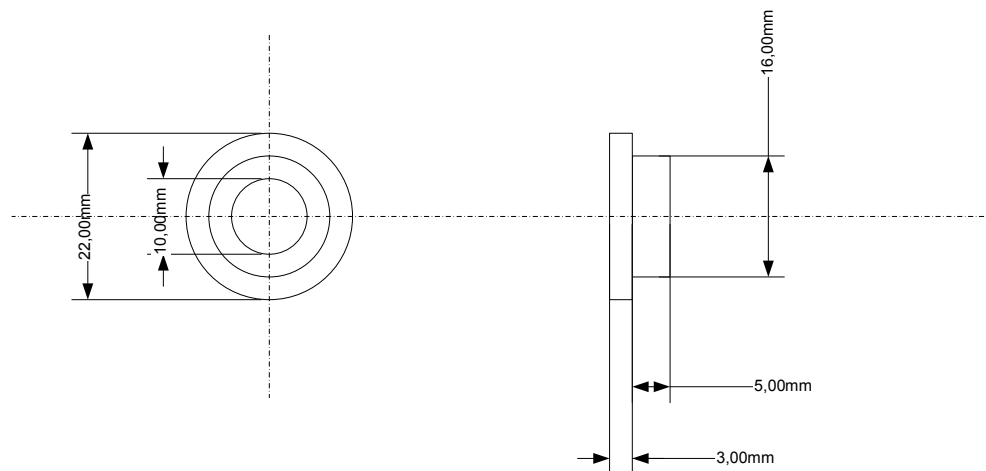
Product: CU-ROBOTARM
File: ARM
Version: 1
Date: 20.01.2009
Last Modify:-

UlrichC

© 2009 Christian Ulrich
All rights reserved

UlrichC.DE
INTERNET: <http://www.ulrichc.de/>
E-MAIL : info@ulrichc.de

Ausleger-Lager



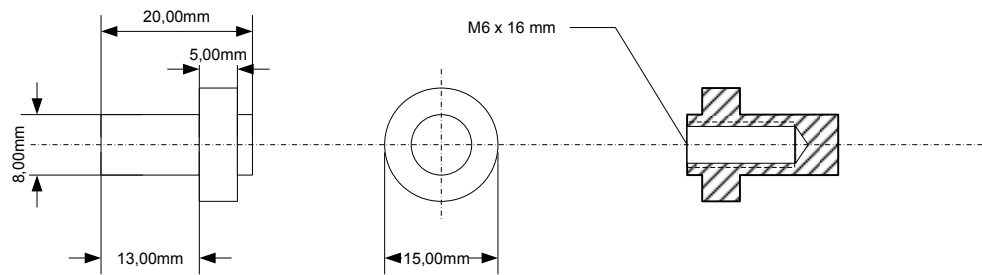
Product:CU-ROBOTARM
File: ARM
Version: 1
Date: 20.01.2009
Last Modify:-

UlrichC

© 2009 Christian Ulrich
All rights reserved

UlrichC.DE
INTERNET: <http://www.ulrichc.de/>
E-MAIL : info@ulrichc.de

Zylinder-Lager

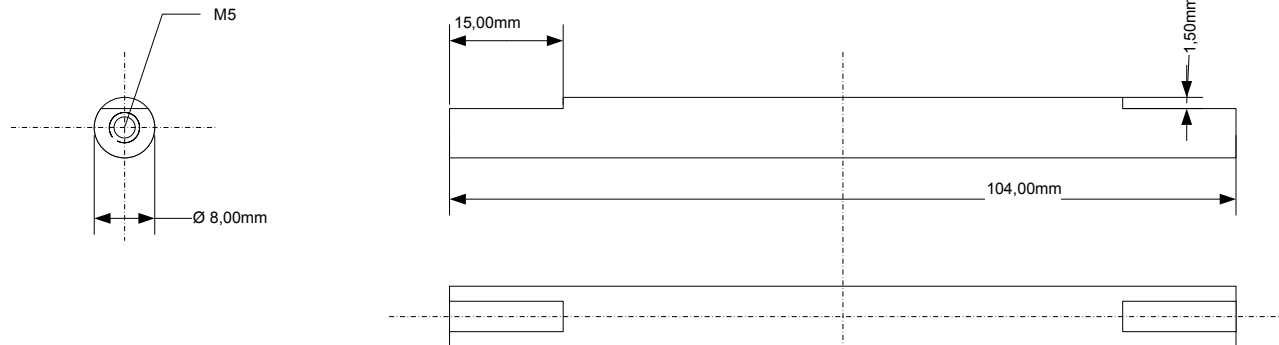


Product:CU-ROBOTARM
File: ARM
Version: 1
Date: 20.01.2009
Last Modify:-

UlrichC
© 2009 Christian Ulrich
All rights reserved

UlrichC.DE
INTERNET: <http://www.ulrichc.de/>
E-MAIL : info@ulrichc.de

Zylinderkopf-Welle



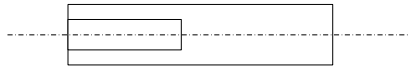
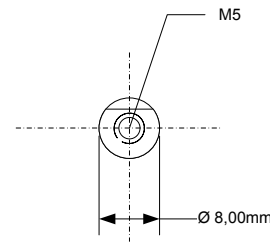
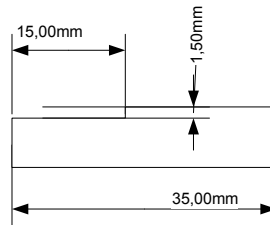
Product:CU-ROBOTARM
File: ARM
Version: 1
Date: 20.01.2009
Last Modify:-

UlrichC

© 2009 Christian Ulrich
All rights reserved

UlrichC.DE
INTERNET: <http://www.ulrichc.de/>
E-MAIL : info@ulrichc.de

Zylinderkopf-Wellenstummel



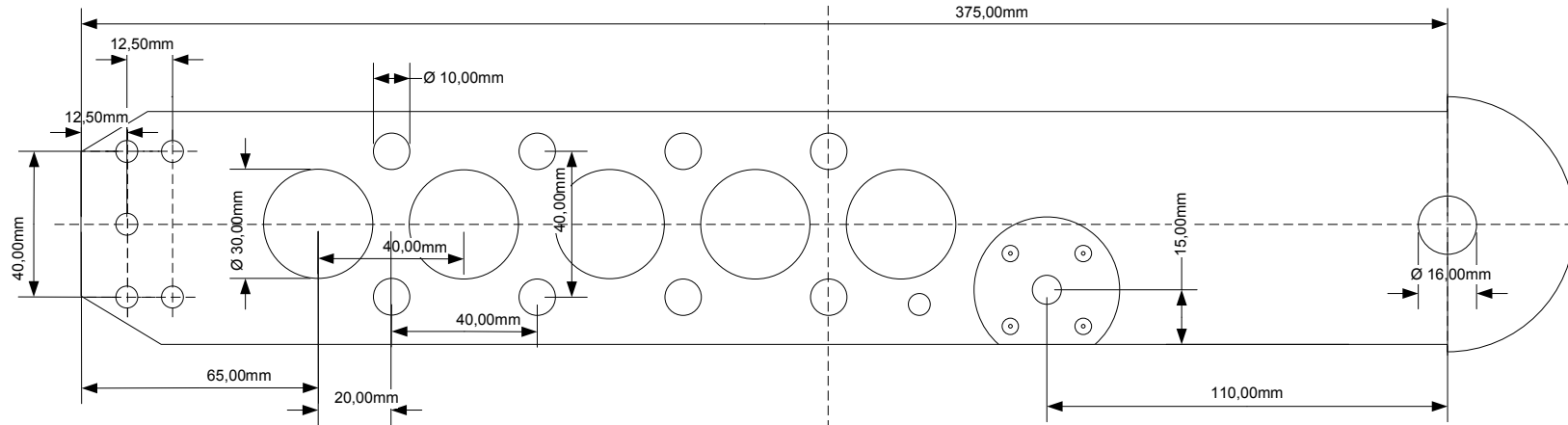
Product: CU-ROBOTARM
File: ARM
Version: 1
Date: 20.01.2009
Last Modify:-

UlrichC

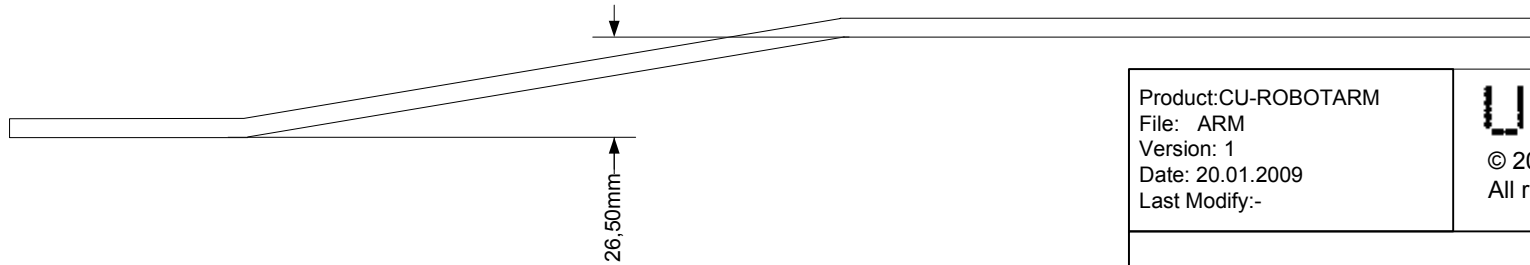
© 2009 Christian Ulrich
All rights reserved

UlrichC.DE
INTERNET: <http://www.ulrichc.de/>
E-MAIL : info@ulrichc.de

Endausleger-Seitenteil



Abkantung (Kontur)

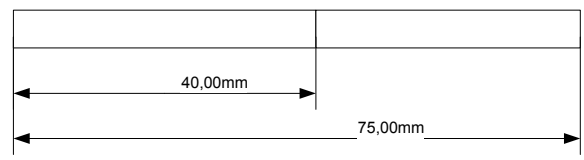
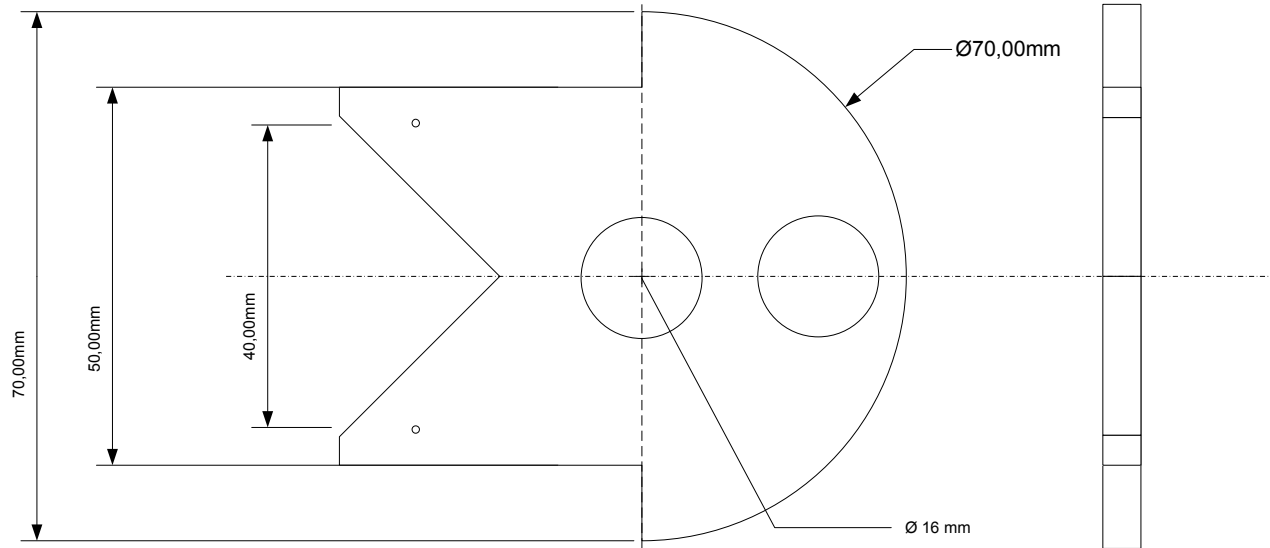


Product: CU-ROBOTARM
 File: ARM
 Version: 1
 Date: 20.01.2009
 Last Modify:-

UlrichC
 © 2009 Christian Ulrich
 All rights reserved

UlrichC.DE
 INTERNET: <http://www.ulrichc.de/>
 E-MAIL : info@ulrichc.de

Endausleger-Seitenteil-Verstärkung

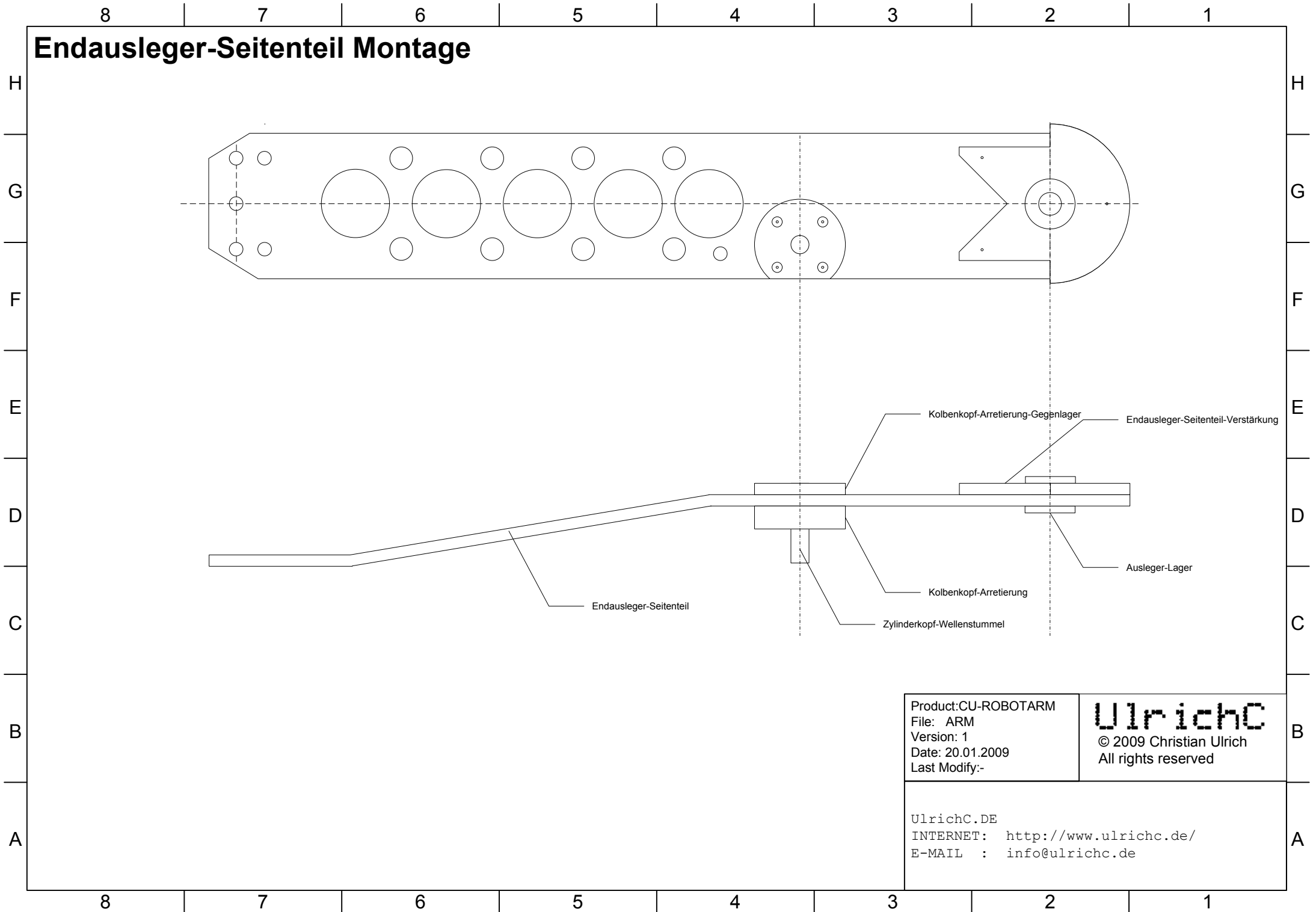


Product:CU-ROBOTARM
 File: ARM
 Version: 1
 Date: 20.01.2009
 Last Modify:-

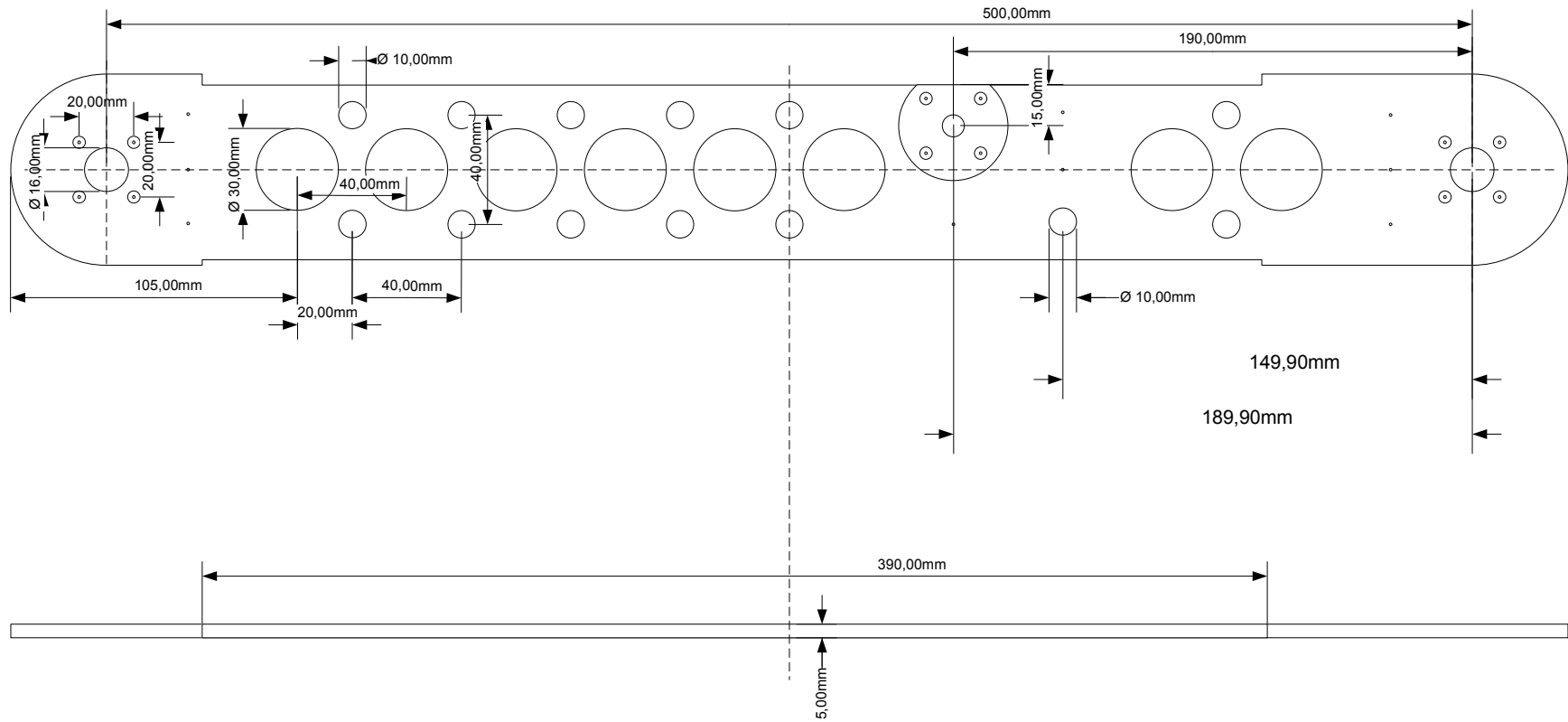
UlrichC
 © 2009 Christian Ulrich
 All rights reserved

UlrichC.DE
 INTERNET: <http://www.ulrichc.de/>
 E-MAIL : info@ulrichc.de

Endausleger-Seitenteil Montage



Mittelausleger-Seitenteil

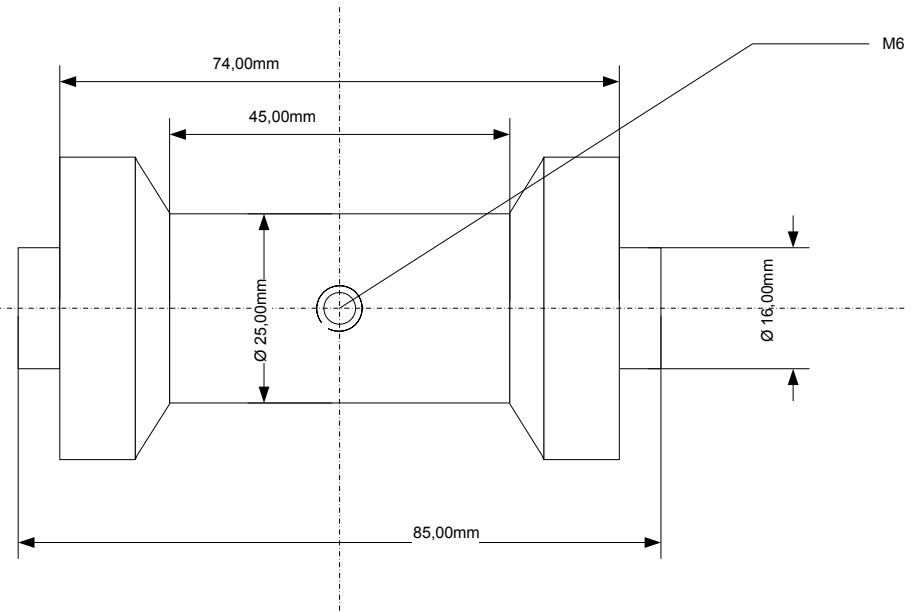
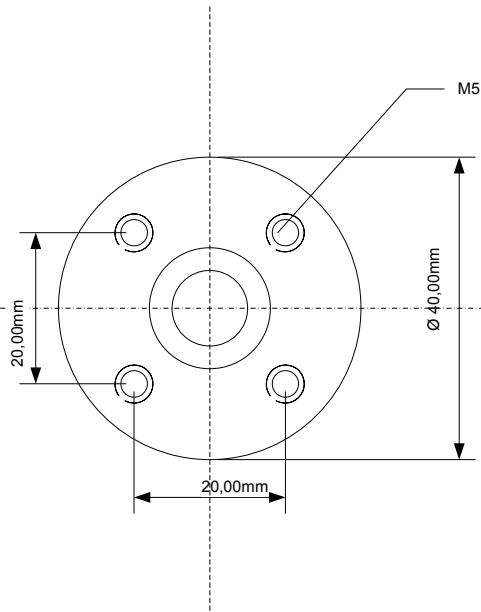


Product:CU-ROBOTARM
File: ARM
Version: 1
Date: 20.01.2009
Last Modify:-

UlrichC
© 2009 Christian Ulrich
All rights reserved

UlrichC.DE
INTERNET: <http://www.ulrichc.de/>
E-MAIL : info@ulrichc.de

Mittelausleger-Distanzstück

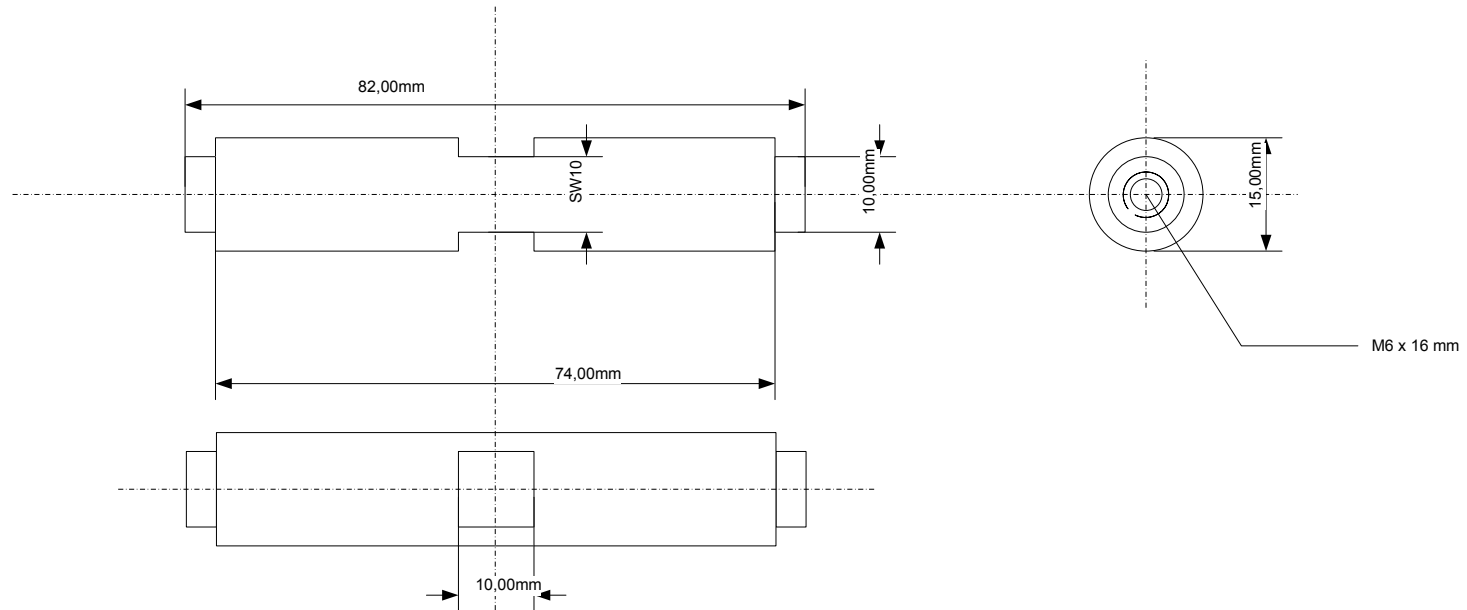


Product: CU-ROBOTARM
File: ARM
Version: 1
Date: 20.01.2009
Last Modify:-

UlrichC
© 2009 Christian Ulrich
All rights reserved

UlrichC.DE
INTERNET: <http://www.ulrichc.de/>
E-MAIL : info@ulrichc.de

Mittelausleger-Stabilisator



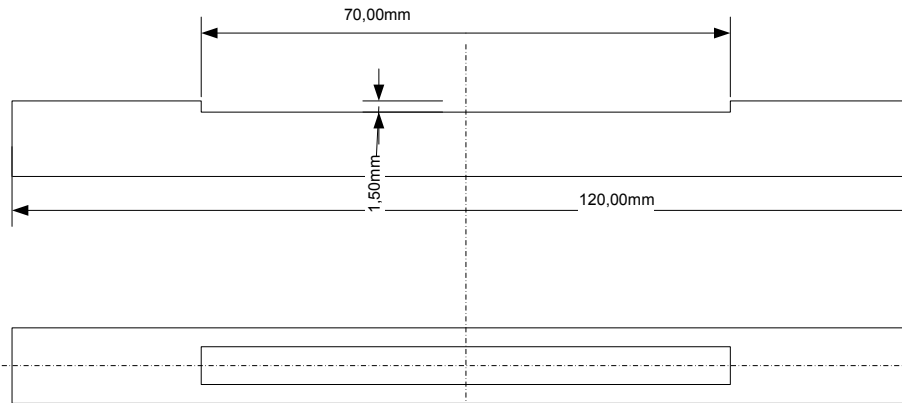
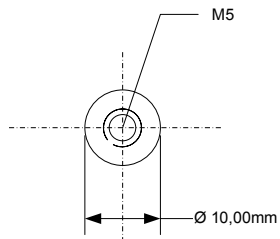
Product: CU-ROBOTARM
File: ARM
Version: 1
Date: 20.01.2009
Last Modify:-

UlrichC

© 2009 Christian Ulrich
All rights reserved

UlrichC.DE
INTERNET: <http://www.ulrichc.de/>
E-MAIL : info@ulrichc.de

Mittelausleger-Achse

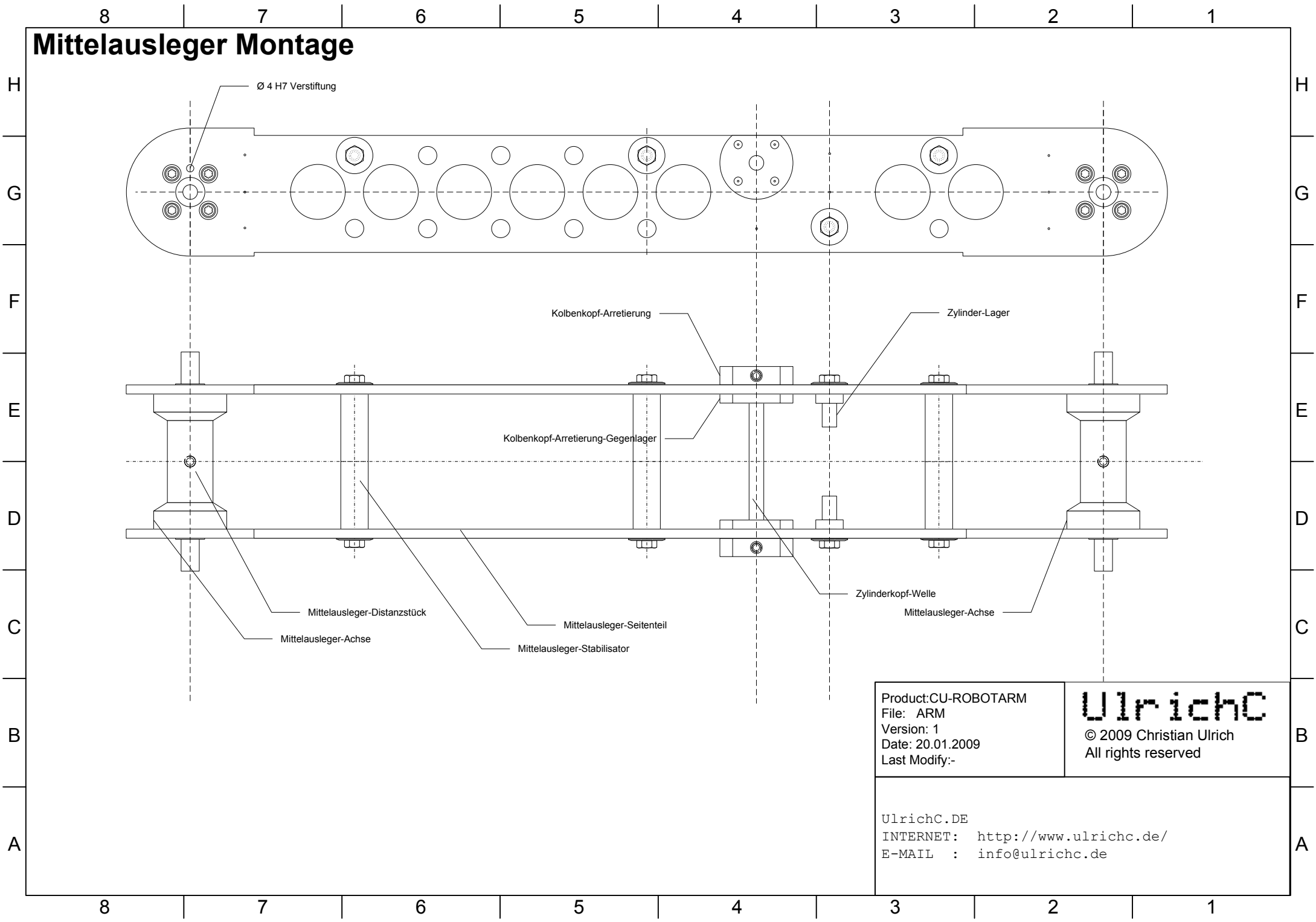


Product:CU-ROBOTARM
File: ARM
Version: 1
Date: 20.01.2009
Last Modify:-

UlrichC
© 2009 Christian Ulrich
All rights reserved

UlrichC.DE
INTERNET: <http://www.ulrichc.de/>
E-MAIL : info@ulrichc.de

Mittelausleger Montage

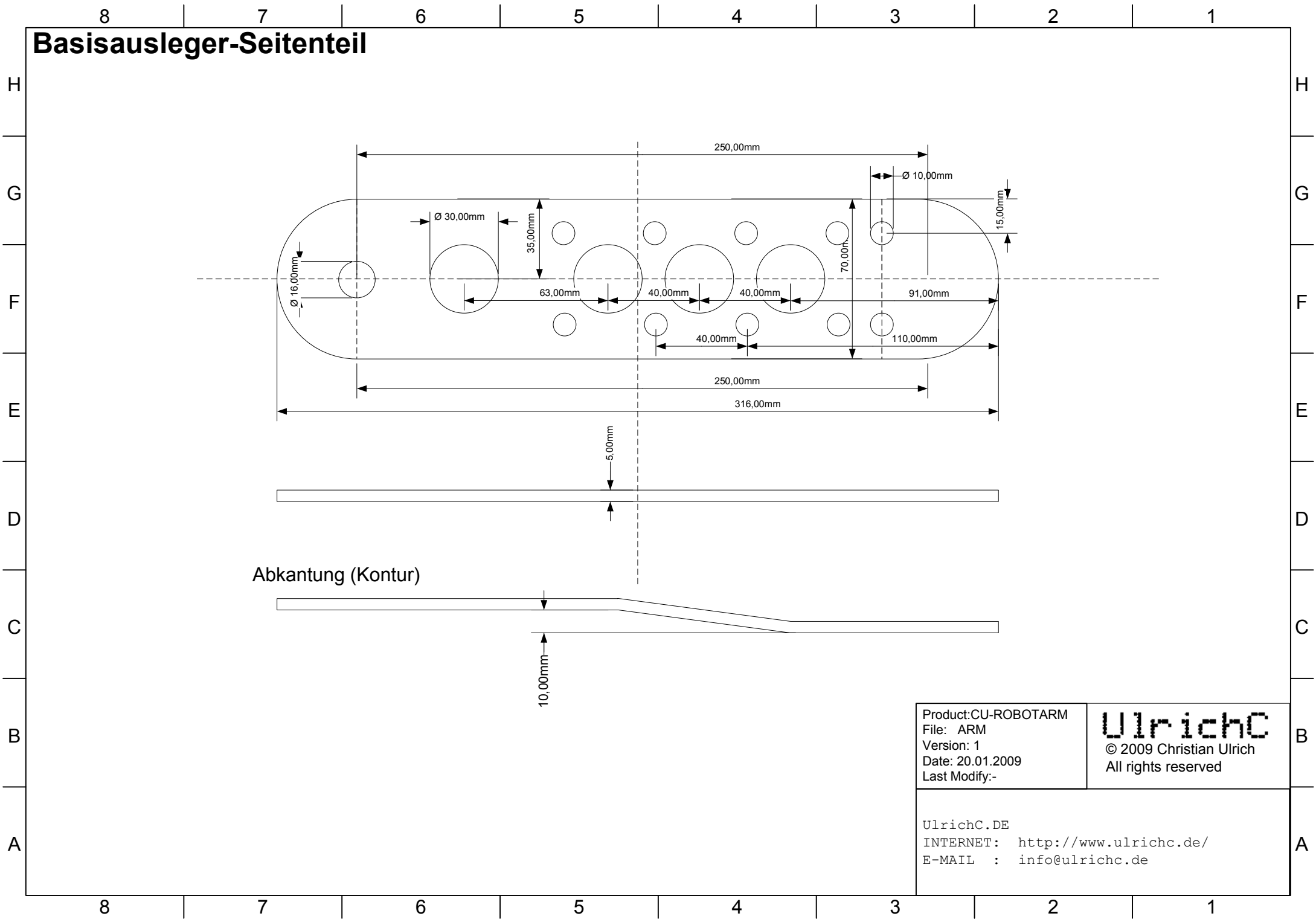


Product: CU-ROBOTARM
 File: ARM
 Version: 1
 Date: 20.01.2009
 Last Modify:-

UlrichC
 © 2009 Christian Ulrich
 All rights reserved

UlrichC.DE
 INTERNET: <http://www.ulrichc.de/>
 E-MAIL : info@ulrichc.de

Basisausleger-Seitenteil



Product: CU-ROBOTARM
 File: ARM
 Version: 1
 Date: 20.01.2009
 Last Modify:-

UlrichC
 © 2009 Christian Ulrich
 All rights reserved

UlrichC.DE
 INTERNET: <http://www.ulrichc.de/>
 E-MAIL : info@ulrichc.de

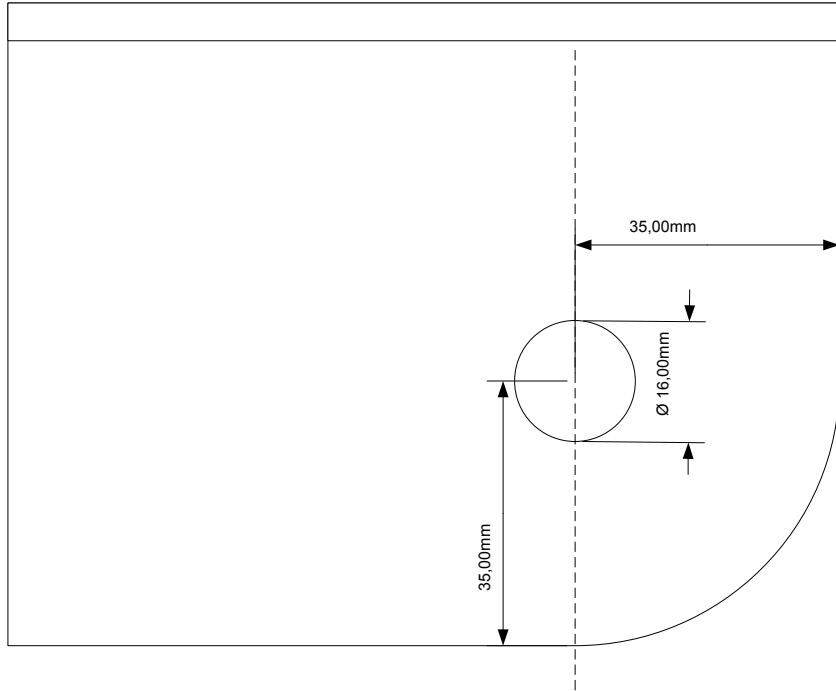
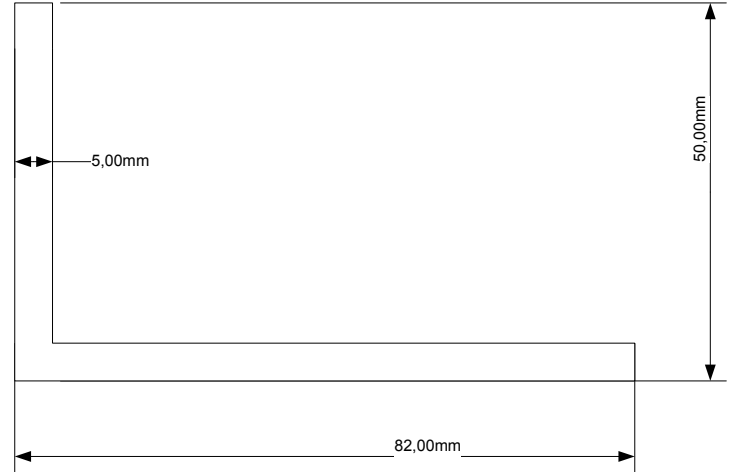
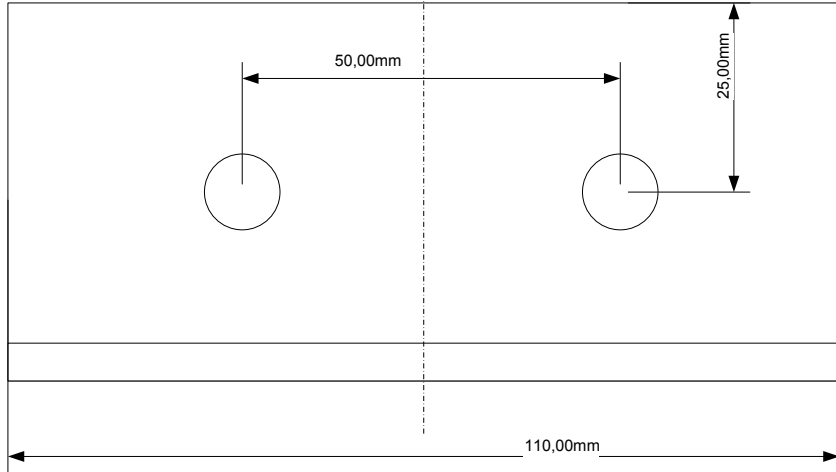
Basisausleger-Fundamentwinkel

H
G
F
E
D
C
B
A

H
G
F
E
D
C
B
A

8 | 7 | 6 | 5 | 4 | 3 | 2 | 1

8 | 7 | 6 | 5 | 4 | 3 | 2 | 1

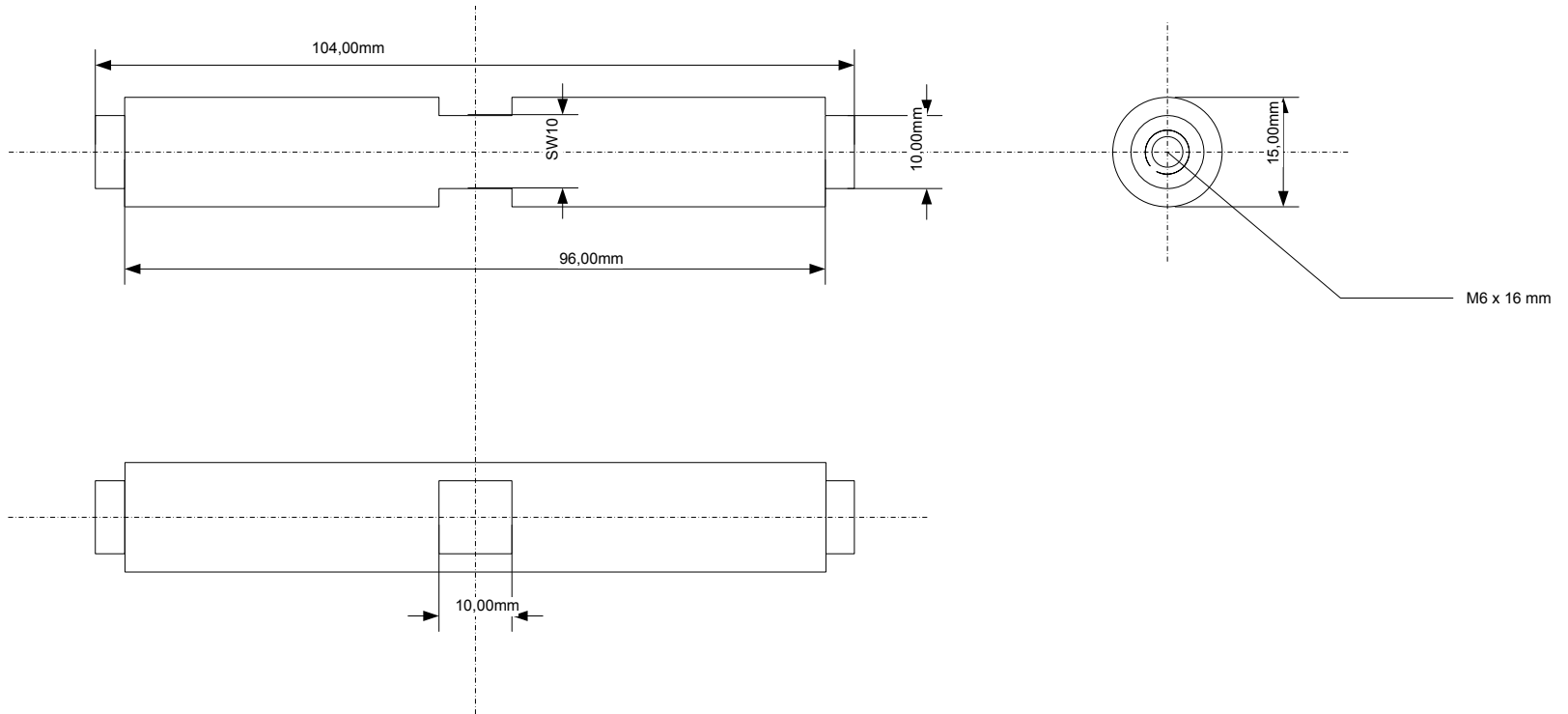


Product: CU-ROBOTARM
 File: ARM
 Version: 1
 Date: 20.01.2009
 Last Modify:-

UlrichC
 © 2009 Christian Ulrich
 All rights reserved

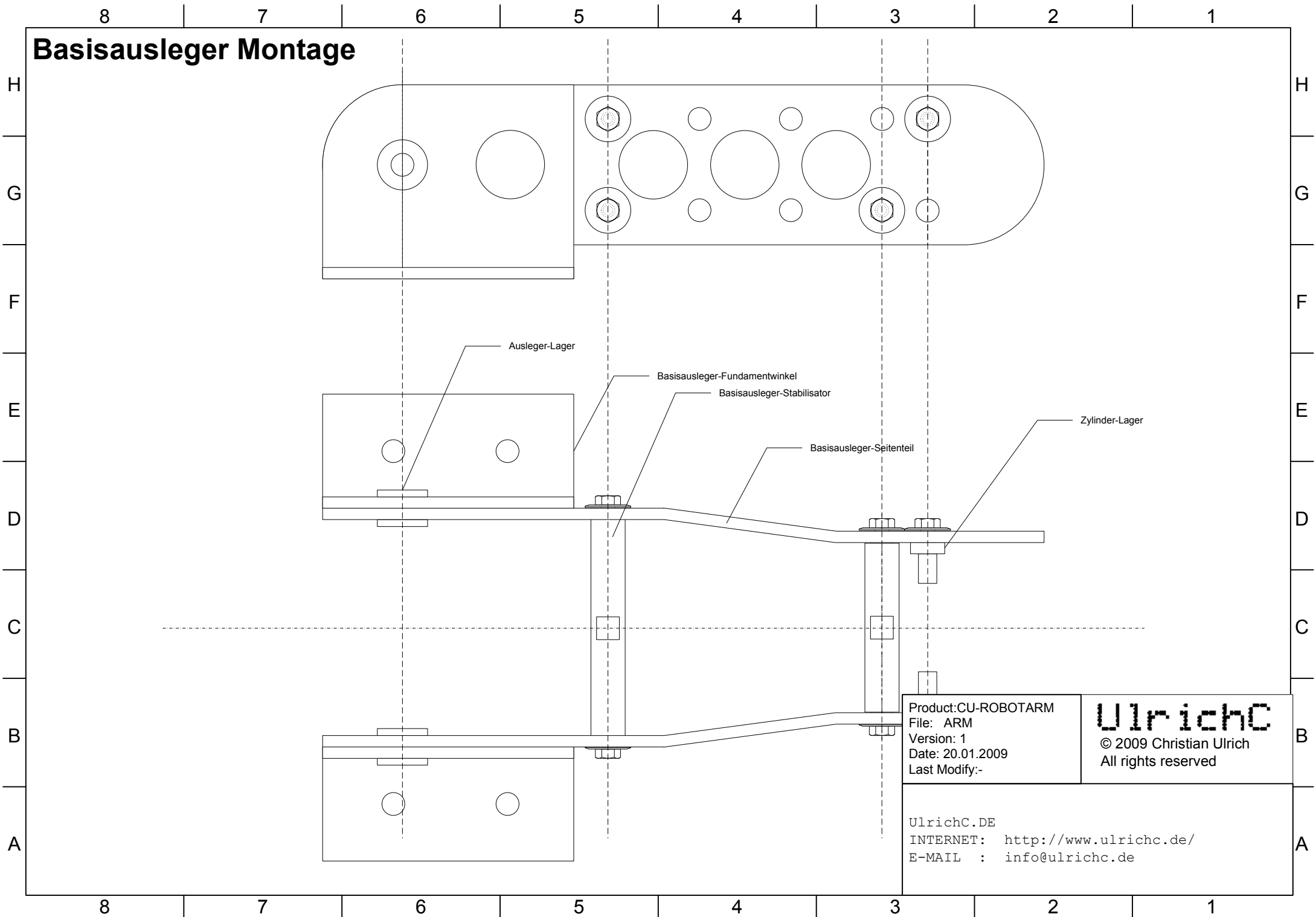
UlrichC.DE
 INTERNET: <http://www.ulrichc.de/>
 E-MAIL : info@ulrichc.de

Basisausleger-Stabilisator



Product: CU-ROBOTARM File: ARM Version: 1 Date: 20.01.2009 Last Modify:-	UlrichC © 2009 Christian Ulrich All rights reserved
UlrichC.DE INTERNET: http://www.ulrichc.de/ E-MAIL : info@ulrichc.de	

Basisausleger Montage

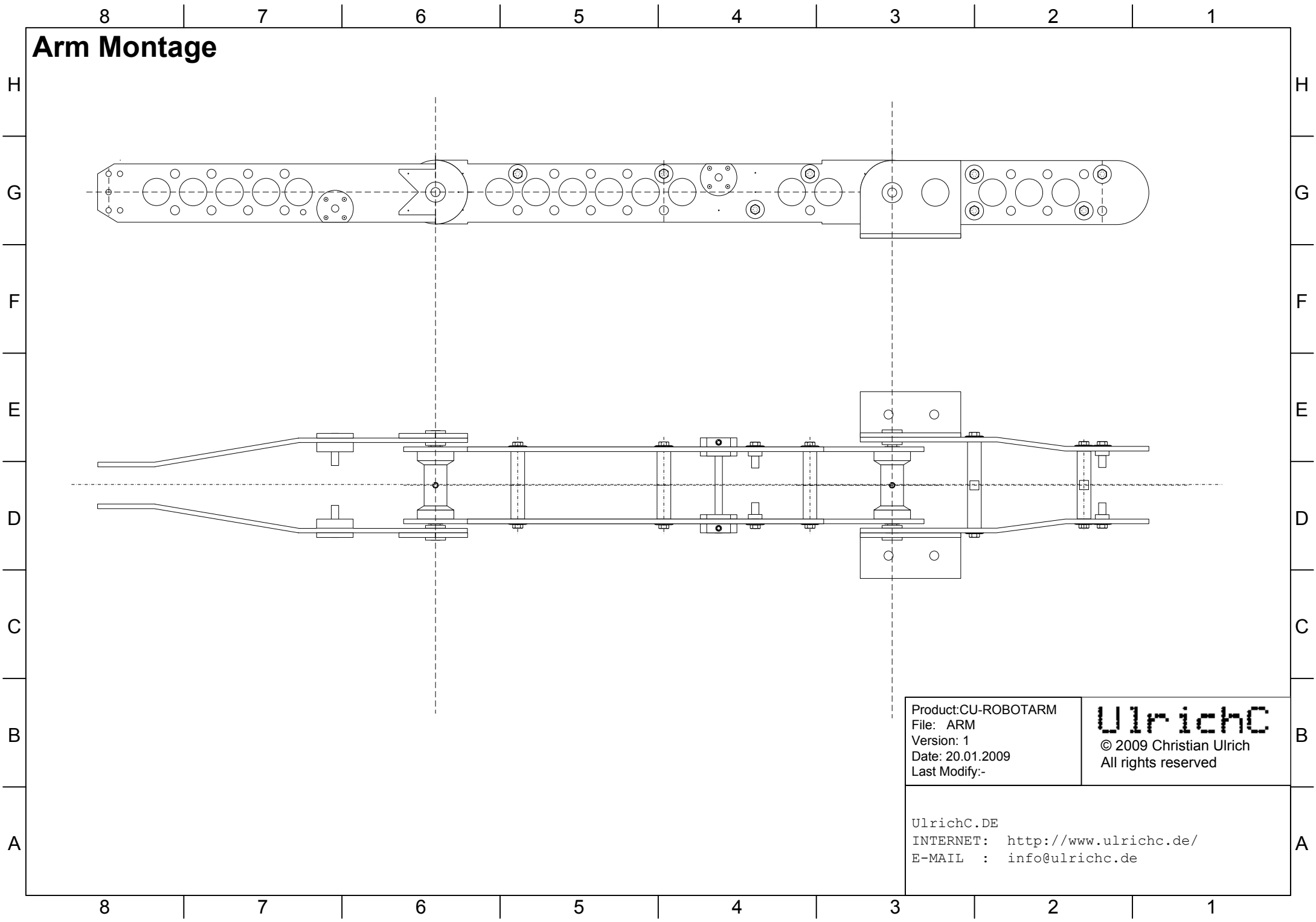


Product:CU-ROBOTARM
File: ARM
Version: 1
Date: 20.01.2009
Last Modify:-

UlrichC
© 2009 Christian Ulrich
All rights reserved

UlrichC.DE
INTERNET: <http://www.ulrichc.de/>
E-MAIL : info@ulrichc.de

Arm Montage

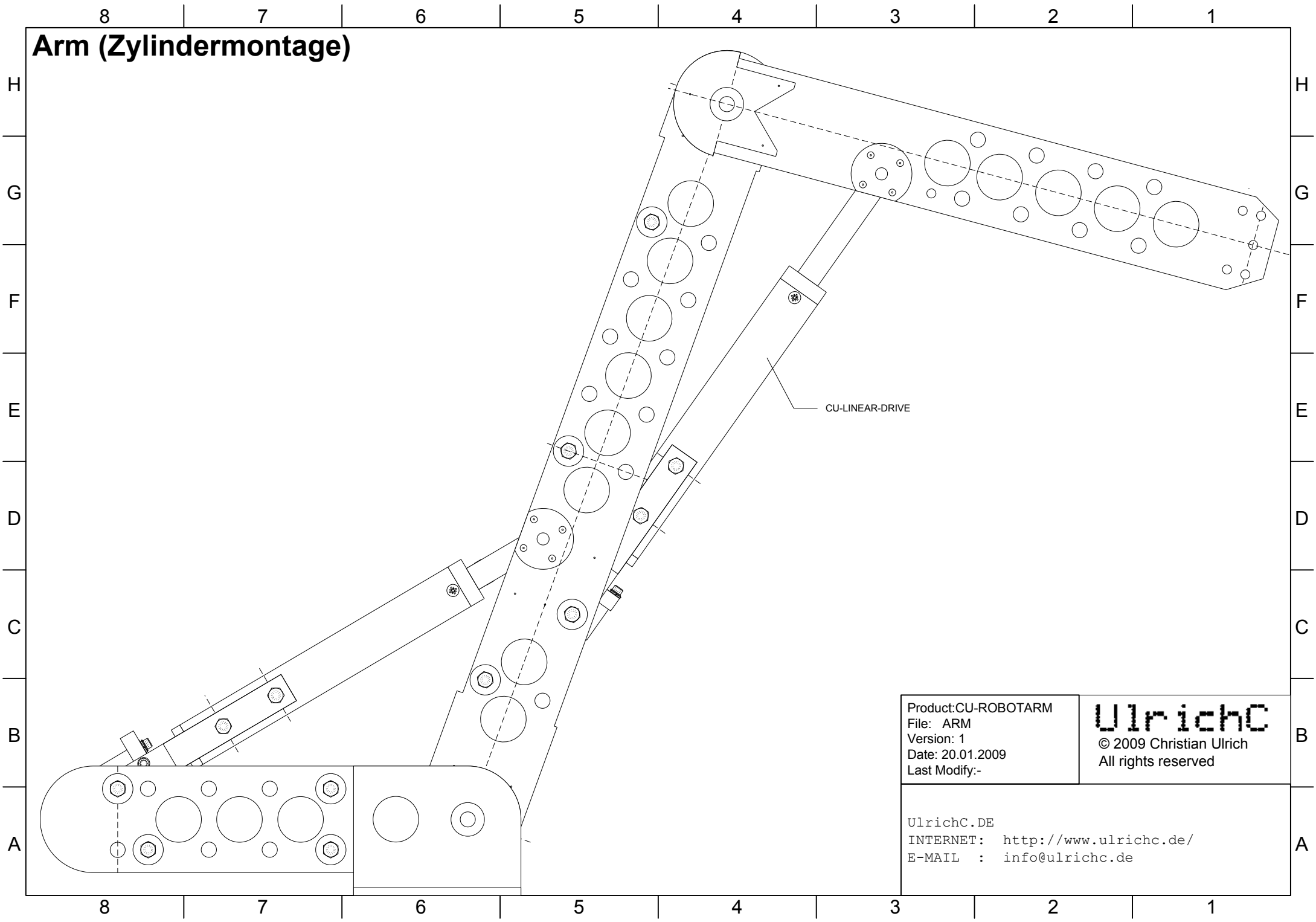


Product:CU-ROBOTARM
File: ARM
Version: 1
Date: 20.01.2009
Last Modify:-

UlrichC
© 2009 Christian Ulrich
All rights reserved

UlrichC.DE
INTERNET: <http://www.ulrichc.de/>
E-MAIL : info@ulrichc.de

Arm (Zylindermontage)



Product:CU-ROBOTARM
File: ARM
Version: 1
Date: 20.01.2009
Last Modify:-

UlrichC
© 2009 Christian Ulrich
All rights reserved

UlrichC.DE
INTERNET: <http://www.ulrichc.de/>
E-MAIL : info@ulrichc.de